

Mouse Monoclonal Antibody to alpha Tubulin

Order Information

Catalog#	P20779
Size/Concentration	100ul
Price(¥)	2180

Description

TUBA1A Tubulin is the major constituent of microtubules. It binds two moles of GTP, one at an exchangeable site on the beta chain and one at a non-exchangeable site on the alpha-chain.

Specification

Entrez GeneID	10376
Swissprot	P68363
Aliases	Tubulin alpha-1B chain; Alpha-tubulin ubiquitous; Tubulin K-alpha-1; Tubulin alpha-ubiquitous chain
Clone#	7C9
MW	Calculated MW: 50 kDa; Observed MW: 50 kDa
Host/Isotype	Mouse IgG1
Storage	Store at 4°C short term. Aliquot and store at -20°C long term. Avoid freeze/thaw cycles.
Species Reactivity	Human,Rat,Mouse
Immunogen	Recombinant Protein of Tubulin alpha-1A chain
Formulation	Liquid in PBS containing 50% glycerol, 0.5% BSA and 0.02% sodium azide, pH 7.3.

Application

WB	1/500-1/1000
IP	1/20
ICC	1/50-1/200
IHC	1/50-1/100






Call 1-510-860-4615
+86-19375157864
Email Info@ProMab.com
Web www.ProMab.com
www.ProMab.cn

Protocol

WB - www.promab.com/protocol/wb.html
IHC - www.promab.com/protocol/ihc.html
ICC - www.promab.com/protocol/icc.html
HCM - www.promab.com/protocol/hcm.html

Antigen Sequence is available upon request.

Products and Services

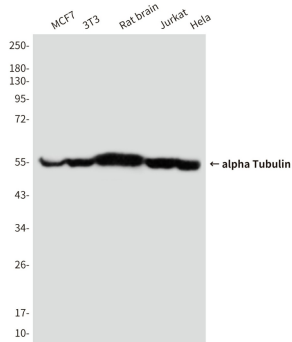
-  Mouse Monoclonal Antibody
-  Rat Monoclonal Antibody
-  Human Antibody
-  Hybridoma Sequencing
-  Polyclonal Antibody

For Research Only

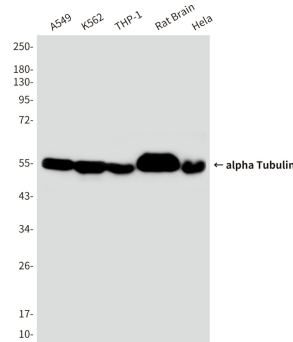
Application Key: **WB** - Western Blot | **IHC** - Immunohistochemistry | **ICC** - Immunocytochemistry | **FCM** - Flow Cytometry | **ELISA** - Enzyme-linked Immunosorbent Assay | **IP** - Immunoprecipitation

#P20779

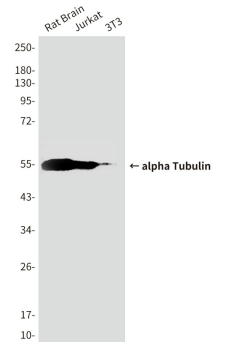
Mouse Monoclonal Antibody to alpha Tubulin



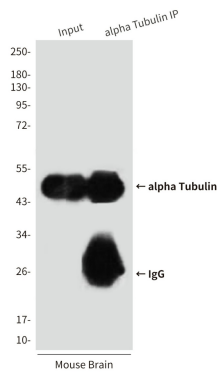
Western blot analysis of alpha Tubulin in MCF-7, 3T3, rat Brain, Jurkat and HeLa lysates using alpha tubulin antibody.



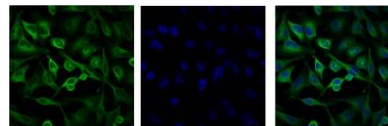
Western blot analysis of alpha Tubulin in A549, K562, THP-1, rat Brain, HeLa lysates using alpha Tubulin antibody.



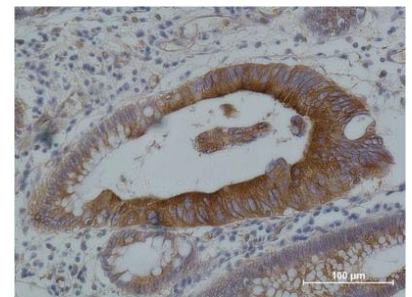
Western blot analysis of alpha Tubulin in rat brain, Jurkat, 3T3 lysates using alpha Tubulin antibody.



Immunoprecipitation analysis of alpha Tubulin in mouse Brain Tissue lysates using alpha Tubulin antibody.



Immunofluorescence analysis of alpha Tubulin in HeLa using alpha Tubulin antibody (Left), and DAPI (blue).



Immunohistochemistry analysis of paraffin-embedded Human Colon carcinoma using alpha tubulin antibody. High-pressure and temperature Sodium Citrate pH 6.0 was used for antigen retrieval.