

Mouse Monoclonal Antibody to MCFD2

Order Information

Catalog#	P34235
Size/Concentration	100ul
Price(¥)	2180

Description

The MCFD2-LMAN1 complex forms a specific cargo receptor for the ER-to-Golgi transport of selected proteins. Plays a role in the secretion of coagulation factors.

Specification

Entrez GeneID	90411
Swissprot	Q8NI22
Aliases	Multiple coagulation factor deficiency protein 2 , Neural stem cell-derived neuronal survival protein, MCFD2, SDNSF
MW	16.4kDa
Host/Isotype	Mouse IgG1
Storage	Store at 4°C short term. Aliquot and store at -20°C long term. Avoid freeze/thaw cycles.
Species Reactivity	Human
Immunogen	This MCFD2 monoclonal antibody is generated from mouse immunized with MCFD2 recombinant protein.
Formulation	Purified monoclonal antibody supplied in PBS with 0.05% sodium azide. This antibody is purified through a protein G column, followed by dialysis against PBS.

Application

WB	1/500-1/1000
----	--------------






Call 1-510-860-4615
+86-19375157864
Email Info@ProMab.com
Web www.ProMab.com
www.ProMab.cn

Protocol

WB - www.promab.com/protocol/wb.html
IHC - www.promab.com/protocol/ihc.html
ICC - www.promab.com/protocol/icc.html
HCM - www.promab.com/protocol/hcm.html

Antigen Sequence is available upon request.

Products and Services

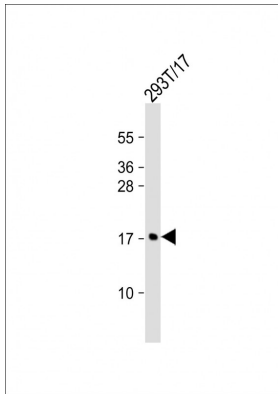
-  Mouse Monoclonal Antibody
-  Rat Monoclonal Antibody
-  Human Antibody
-  Hybridoma Sequencing
-  Polyclonal Antibody

For Research Only

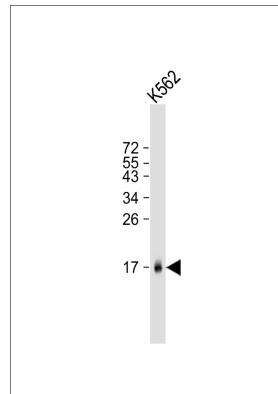
Application Key: WB - Western Blot | IHC - Immunohistochemistry | ICC - Immunocytochemistry | FCM - Flow Cytometry | ELISA - Enzyme-linked Immunosorbent Assay | IP - Immunoprecipitation

#P34235

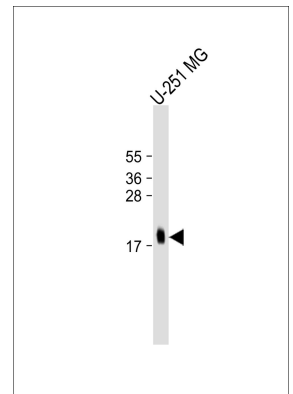
Mouse Monoclonal Antibody to MCFD2



Anti-MCFD2 Antibody at 1:1000 dilution + 293T/17 whole cell lysate
Lysates/proteins at 20 µg per lane.
Secondary Goat Anti-mouse IgG, (H+L), Peroxidase conjugated at 1/10000 dilution. Predicted band size : 16 kDa Blocking/Dilution buffer: 5% NFDm/TBST.



Anti-MCFD2 Antibody at 1:500 dilution + K562 whole cell lysate
Secondary Goat Anti-mouse IgG, (H+L), Peroxidase conjugated at 1/10000 dilution. Predicted band size : 16390 Da Blocking/Dilution buffer: 5% NFDm/TBST.



Anti-MCFD2 Antibody at 1:1000 dilution + U-251 MG whole cell lysate
Secondary Goat Anti-mouse IgG, (H+L), Peroxidase conjugated at 1/10000 dilution. Predicted band size : 16390 Da Blocking/Dilution buffer: 5% NFDm/TBST.

For Research Only

Application Key: WB - Western Blot | IHC - Immunohistochemistry | ICC - Immunocytochemistry | FCM - Flow Cytometry | ELISA - Enzyme-linked Immunosorbent Assay | IP - Immunoprecipitation

#P34235