

Rabbit Polyclonal Antibody to Zebrafish PDHA1

Order Information

Catalog#	P34234
Size/Concentration	100ul
Price(¥)	2180

Description

The pyruvate dehydrogenase (PDH) complex is a nuclear-encoded mitochondrial multienzyme complex that catalyzes the overall conversion of pyruvate to acetyl-CoA and CO₂, and provides the primary link between glycolysis and the tricarboxylic acid (TCA) cycle. The PDH complex is composed of multiple copies of three enzymatic components: pyruvate dehydrogenase (E1), dihydrolipoamide acetyltransferase (E2) and lipoamide dehydrogenase (E3). The E1 enzyme is a heterotetramer of two alpha and two beta subunits. This gene encodes the E1 alpha 1 subunit containing the E1 active site, and plays a key role in the function of the PDH complex. Mutations in this gene are associated with pyruvate dehydrogenase E1-alpha deficiency and X-linked Leigh syndrome.

Specification

Entrez GeneID	406702
Swissprot	Q6P948
Aliases	PDHE1-A type I; Pyruvate dehydrogenase E1 component subunit alpha, somatic form, mitochondrial; PHE1A, PDHA1;pdha1a;pdha1b
MW	43.7kDa
Host/Isotype	Rabbit IgG
Storage	Store at 4°C short term. Aliquot and store at -20°C long term. Avoid freeze/thaw cycles.
Species Reactivity	zebrafish
Immunogen	This Zebrafish PDHA1 antibody is generated from rabbits immunized with a KLH conjugated synthetic peptide between 233~263 amino acids from the Central region of Zebrafish PDHA1.
Formulation	Purified polyclonal antibody supplied in PBS with 0.05% sodium azide. This antibody is purified through a protein A column, followed by peptide affinity purification.

Application

WB	1/1000
----	--------






Call 1-510-860-4615
+86-19375157864
Email Info@ProMab.com
Web www.ProMab.com
www.ProMab.cn

Protocol

WB - www.promab.com/protocol/wb.html
IHC - www.promab.com/protocol/ihc.html
ICC - www.promab.com/protocol/icc.html
HCM - www.promab.com/protocol/hcm.html

Antigen Sequence is available upon request.

Products and Services

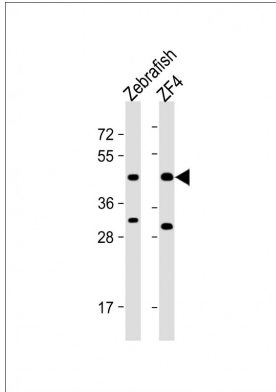
-  Mouse Monoclonal Antibody
-  Rat Monoclonal Antibody
-  Human Antibody
-  Hybridoma Sequencing
-  Polyclonal Antibody

For Research Only

Application Key: WB - Western Blot | IHC - Immunohistochemistry | ICC - Immunocytochemistry | FCM - Flow Cytometry | ELISA - Enzyme-linked Immunosorbent Assay | IP - Immunoprecipitation

#P34234

Rabbit Polyclonal Antibody to Zebrafish PDHA1



All lanes : Anti-PDHA1 Antibody
(Center) at 1:1000 dilution Lane 1:
Zebrafish lysate Lane 2: ZF4 whole
cell lysate Lysates/proteins at 20 μ g
per lane. Secondary Goat Anti-
Rabbit IgG, (H+L), Peroxidase
conjugated at 1/10000 dilution.
Predicted band size : 44 kDa
Blocking/Dilution buffer: 5%
NFDN/TBST.