

Rabbit Polyclonal Antibody to DANRE atg4b (N-term)

Order Information

Catalog#	P34232
Size/Concentration	100ul
Price(¥)	2180

Description

Cysteine protease required for autophagy, which is able to cleave the C-terminal part of proteins that may be subsequently converted to a smaller form, with a revealed C-terminal glycine, considered to be the phosphatidylethanolamine (PE)-conjugated form. This conjugated form has the capacity for the binding to autophagosomes (By similarity).

Specification

Swissprot	Q6DG88
Aliases	Cysteine protease ATG4B, 3422-, Autophagy-related protein 4 homolog B, atg4b, apg4b
MW	44.5kDa
Host/Isotype	Rabbit IgG
Storage	Store at 4°C short term. Aliquot and store at -20°C long term. Avoid freeze/thaw cycles.
Species Reactivity	Human, zebrafish, Mouse
Immunogen	This DANRE atg4b antibody is generated from rabbits immunized with a KLH conjugated synthetic peptide between 1-30 amino acids from the N-terminal region of DANRE atg4b.
Formulation	Purified polyclonal antibody supplied in PBS with 0.05% sodium azide. This antibody is purified through a protein A column, followed by peptide affinity purification.

Application

WB	1/1000
----	--------






Call 1-510-860-4615
+86-19375157864
Email Info@ProMab.com
Web www.ProMab.com
www.ProMab.cn

Protocol

WB - www.promab.com/protocol/wb.html
IHC - www.promab.com/protocol/ihc.html
ICC - www.promab.com/protocol/icc.html
HCM - www.promab.com/protocol/hcm.html

Antigen Sequence is available upon request.

Products and Services

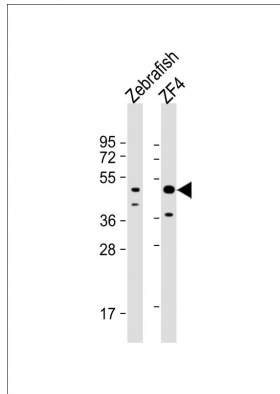
-  Mouse Monoclonal Antibody
-  Rat Monoclonal Antibody
-  Human Antibody
-  Hybridoma Sequencing
-  Polyclonal Antibody

For Research Only

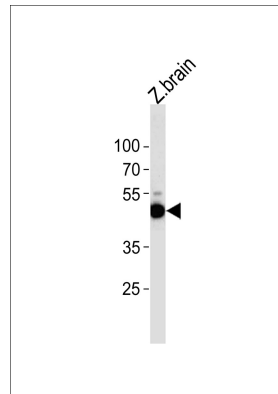
Application Key: WB - Western Blot | IHC - Immunohistochemistry | ICC - Immunocytochemistry | FCM - Flow Cytometry | ELISA - Enzyme-linked Immunosorbent Assay | IP - Immunoprecipitation

#P34232

Rabbit Polyclonal Antibody to DANRE atg4b (N-term)



All lanes : Anti-(DANRE) atg4b Antibody (N-term) at 1:1000 dilution
Lane 1: Zebrafish lysate Lane 2: ZF4 whole cell lysate
Lysates/proteins at 20 µg per lane.
Secondary Goat Anti-Rabbit IgG, (H+L), Peroxidase conjugated at 1/10000 dilution. Predicted band size : 44 kDa Blocking/Dilution buffer: 5% NFDm/TBST.



DANRE atg4b Antibody (N-term) (Cat. #P34232) western blot analysis in zebra fish brain tissue lysates (35ug/lane). This demonstrates the DANRE atg4b antibody detected the DANRE atg4b protein (arrow).

For Research Only

Application Key: WB - Western Blot | IHC - Immunohistochemistry | ICC - Immunocytochemistry | FCM - Flow Cytometry | ELISA - Enzyme-linked Immunosorbent Assay | IP - Immunoprecipitation

#P34232