

# Rabbit Polyclonal Antibody to DANRE foxh1

## Order Information

Catalog#	P34231
Size/Concentration	100ul
Price(¥)	2180

## Description

Transcriptional activator. Activates an activin response element (ARE). Recognizes and binds to the DNA sequence 5'-TGT[GT][GT]ATT-3'. Modulator of nodal signaling required for organizer formation. Also required for the development of dorsal axial structures and left-right symmetry.

## Specification

Entrez GeneID	57930
Swissprot	Q9I9E1
Aliases	Forkhead box protein H1, Forkhead activin signal transducer 1, Fast-1, Schmalspur protein, foxh1, fast1, sur
MW	51.6kDa
Host/Isotype	Rabbit IgG
Storage	Store at 4°C short term. Aliquot and store at -20°C long term. Avoid freeze/thaw cycles.
Species Reactivity	zebrafish
Immunogen	This DANRE foxh1 antibody is generated from rabbits immunized with a KLH conjugated synthetic peptide between 313-334 amino acids from the Central region of DANRE foxh1.
Formulation	Purified polyclonal antibody supplied in PBS with 0.05% sodium azide. This antibody is purified through a protein A column, followed by peptide affinity purification.

## Application






WB	1/1000
----	--------

Call 1-510-860-4615  
+86-19375157864  
Email [Info@ProMab.com](mailto:Info@ProMab.com)  
Web [www.ProMab.com](http://www.ProMab.com)  
[www.ProMab.cn](http://www.ProMab.cn)

## Protocol

WB - [www.promab.com/protocol/wb.html](http://www.promab.com/protocol/wb.html)  
IHC - [www.promab.com/protocol/ihc.html](http://www.promab.com/protocol/ihc.html)  
ICC - [www.promab.com/protocol/icc.html](http://www.promab.com/protocol/icc.html)  
HCM - [www.promab.com/protocol/hcm.html](http://www.promab.com/protocol/hcm.html)  
**Antigen Sequence** is available upon request.

## Products and Services

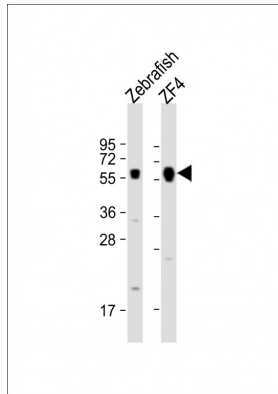
-  Mouse Monoclonal Antibody
-  Rat Monoclonal Antibody
-  Human Antibody
-  Hybridoma Sequencing
-  Polyclonal Antibody

## For Research Only

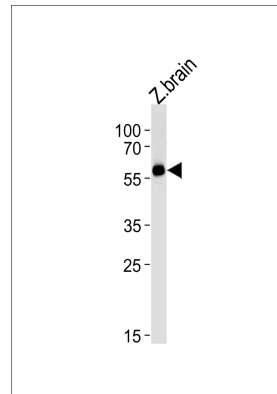
**Application Key:** **WB** - Western Blot | **IHC** - Immunohistochemistry | **ICC** - Immunocytochemistry | **FCM** - Flow Cytometry | **ELISA** - Enzyme-linked Immunosorbent Assay | **IP** - Immunoprecipitation

#P34231

# Rabbit Polyclonal Antibody to DANRE foxh1



All lanes : Anti-(DANRE) foxh1 Antibody (Center) at 1:1000 dilution  
 Lane 1: Zebrafish lysate Lane 2: ZF4 whole cell lysate  
 Lysates/proteins at 20 µg per lane.  
 Secondary Goat Anti-Rabbit IgG, (H+L), Peroxidase conjugated at 1/10000 dilution. Predicted band size : 52 kDa Blocking/Dilution buffer: 5% NFDM/TBST.



DANRE foxh1 Antibody (Center) (Cat. #P34231) western blot analysis in zebra fish brain tissue lysates (35ug/lane). This demonstrates the DANRE foxh1 antibody detected the DANRE foxh1 protein (arrow).

**For Research Only**

**Application Key:** **WB** - Western Blot | **IHC** - Immunohistochemistry | **ICC** - Immunocytochemistry | **FCM** - Flow Cytometry | **ELISA** - Enzyme-linked Immunosorbent Assay | **IP** - Immunoprecipitation

#P34231