

Mouse Monoclonal Antibody to MCM3

Order Information

Catalog#	32392
Size/Concentration	50ul 100ul
Price(¥)	1280 2180

Description

The protein encoded by this gene is one of the highly conserved mini-chromosome maintenance proteins (MCM) that are involved in the initiation of eukaryotic genome replication. The hexameric protein complex formed by MCM proteins is a key component of the pre-replication complex (pre_RC) and may be involved in the formation of replication forks and in the recruitment of other DNA replication related proteins. This protein is a subunit of the protein complex that consists of MCM2-7. It has been shown to interact directly with MCM5/CDC46. This protein also interacts with and is acetylated by MCM3AP, a chromatin-associated acetyltransferase. The acetylation of this protein inhibits the initiation of DNA replication and cell cycle progression. Several transcript variants encoding different isoforms have been found for this gene.

Specification

Entrez GeneID	4172
Aliases	HCC5; P1.h; RLFB; P1-MCM3
Clone#	1D4A3
MW	91kDa
Host/Isotype	Mouse IgG1
Storage	4°C; -20°C for long term storage. Avoid freeze/thaw cycles.
Species Reactivity	Human, Monkey, Rat
Immunogen	Purified recombinant fragment of human MCM 3 expressed in E. Coli.
Formulation	Purified antibody in PBS with 0.05% sodium azide

Application

WB	1/500 - 1/2000
ICC	1/50 - 1/200
FCM	1/200 - 1/400
IHC	1/200 - 1/1000

References

- 1.Comput Math Methods Med. 2021 Oct 11;2021:8494260.
- 2.Biosci Rep. 2020 Jul 31;40(7):BSR20201503.

Call 1-510-860-4615
+86-19375157864
Email Info@ProMab.com
Web www.ProMab.com
www.ProMab.cn

Protocol

WB - www.promab.com/protocol/wb.html
IHC - www.promab.com/protocol/ihc.html
ICC - www.promab.com/protocol/icc.html
HCM - www.promab.com/protocol/hcm.html

Antigen Sequence is available upon request.

Products and Services

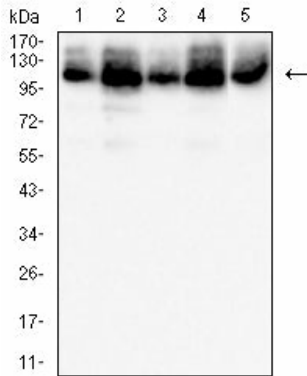
- Mouse Monoclonal Antibody
- Rat Monoclonal Antibody
- Human Antibody
- Hybridoma Sequencing
- Polyclonal Antibody

For Research Only

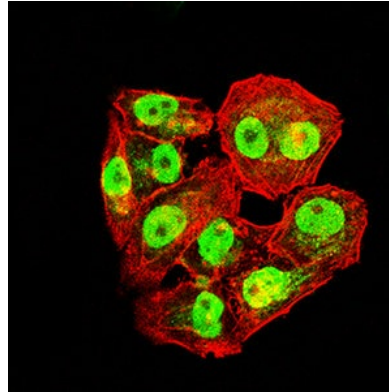
Application Key: WB - Western Blot | IHC - Immunohistochemistry | ICC - Immunocytochemistry | FCM - Flow Cytometry | ELISA - Enzyme-linked Immunosorbent Assay | IP - Immunoprecipitation

#32392

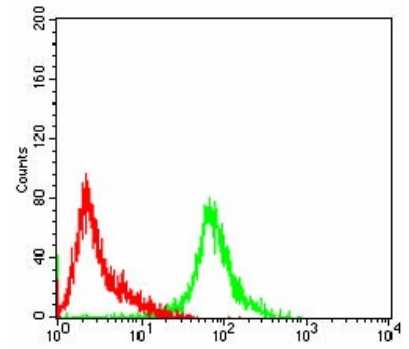
Mouse Monoclonal Antibody to MCM3



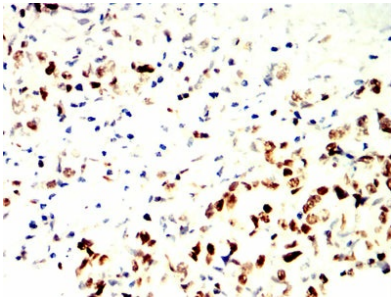
Western blot analysis using MCM3 mouse mAb against PC-12 (1), HepG2 (2), HeLa (3) and COS7 (4) cell lysate.



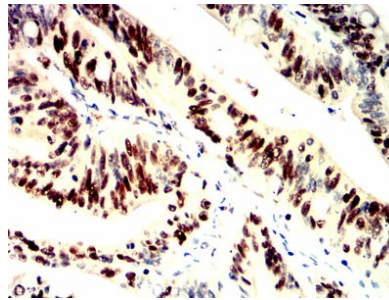
Immunofluorescence analysis of HeLa cells using MCM3 mouse mAb (green). Blue: DRAQ5 fluorescent DNA dye. Red: Actin filaments have been labeled with Alexa Fluor-555 phalloidin. Secondary antibody from Fisher (Cat#: 35503)



Flow cytometric analysis of HeLa cells using MCM3 mouse mAb (green) and negative control (red).



Immunohistochemical analysis of paraffin-embedded human stomach cancer tissues using MCM3 mouse mAb with DAB staining.



Immunohistochemical analysis of paraffin-embedded human rectum cancer tissues using MCM3 mouse mAb with DAB staining.

For Research Only

Application Key: WB - Western Blot | IHC - Immunohistochemistry | ICC - Immunocytochemistry | FCM - Flow Cytometry | ELISA - Enzyme-linked Immunosorbent Assay | IP - Immunoprecipitation

#32392