

# Mouse Monoclonal Antibody to CDH1

## Order Information

|                    |            |
|--------------------|------------|
| Catalog#           | 32053      |
| Size/Concentration | 50ul 100ul |
| Price(¥)           | 1280 2180  |

## Description

This gene encodes a classical cadherin of the cadherin superfamily. Alternative splicing results in multiple transcript variants, at least one of which encodes a preproprotein that is proteolytically processed to generate the mature glycoprotein. This calcium-dependent cell-cell adhesion protein is comprised of five extracellular cadherin repeats, a transmembrane region and a highly conserved cytoplasmic tail. Mutations in this gene are correlated with gastric, breast, colorectal, thyroid and ovarian cancer. Loss of function of this gene is thought to contribute to cancer progression by increasing proliferation, invasion, and/or metastasis. The ectodomain of this protein mediates bacterial adhesion to mammalian cells and the cytoplasmic domain is required for internalization. This gene is present in a gene cluster with other members of the cadherin family on chromosome 16.

## Specification

|                    |   |
|--------------------|---|
| Entrez GeneID      | 999   |
| Aliases            | UVO; CDHE; ECAD; LCAM; Arc-1; BCDS1; CD324  |
| Clone#             | 6G2B3   |
| MW                 | 97.5kDa   |
| Host/Isotype       | Mouse IgG1  |
| Storage            | 4°C; -20°C for long term storage. Avoid freeze/thaw cycles.                           |
| Species Reactivity | Human   |
| Immunogen          | Purified recombinant fragment of human CDH1 (AA:extra(155-354)) expressed in E. Coli. |
| Formulation        | Purified antibody in PBS with 0.05% sodium azide                                      |

## Application

|       |                |
|-------|----------------|
| ELISA | 1/10000        |
| WB    | 1/500 - 1/2000 |
| FCM   | 1/200 - 1/400  |
| IHC   | 1/200 - 1/1000 |

## References

- 1, PLoS One. 2020 Apr 29;15(4):e0232429.
- 2, Gene. 2020 Sep 5;754:144899.

Call 1-510-860-4615  
+86-19375157864  
Email [Info@ProMab.com](mailto:Info@ProMab.com)  
Web [www.ProMab.com](http://www.ProMab.com)  
[www.ProMab.cn](http://www.ProMab.cn)

## Protocol

WB - [www.promab.com/protocol/wb.html](http://www.promab.com/protocol/wb.html)  
IHC - [www.promab.com/protocol/ihc.html](http://www.promab.com/protocol/ihc.html)  
ICC - [www.promab.com/protocol/icc.html](http://www.promab.com/protocol/icc.html)  
HCM - [www.promab.com/protocol/hcm.html](http://www.promab.com/protocol/hcm.html)

**Antigen Sequence** is available upon request.

## Products and Services

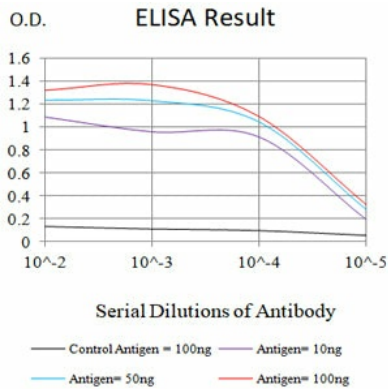
- Mouse Monoclonal Antibody
- Rat Monoclonal Antibody
- Human Antibody
- Hybridoma Sequencing
- Polyclonal Antibody

## For Research Only

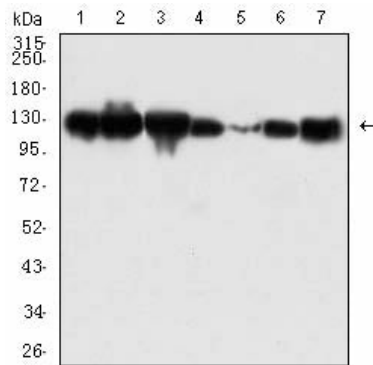
**Application Key:** WB - Western Blot | IHC - Immunohistochemistry | ICC - Immunocytochemistry | FCM - Flow Cytometry | ELISA - Enzyme-linked Immunosorbent Assay | IP - Immunoprecipitation

# #32053

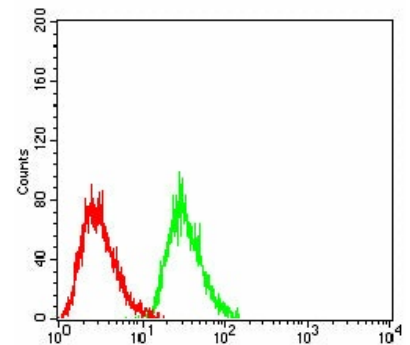
# Mouse Monoclonal Antibody to CDH1



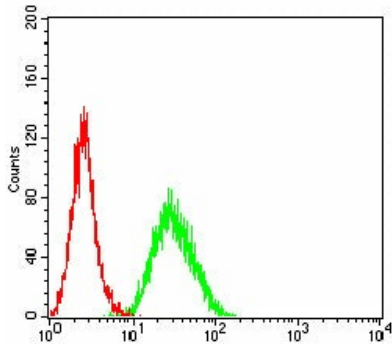
Black line: Control Antigen (100 ng); Purple line: Antigen (10ng); Blue line: Antigen (50 ng); Red line: Antigen (100 ng)



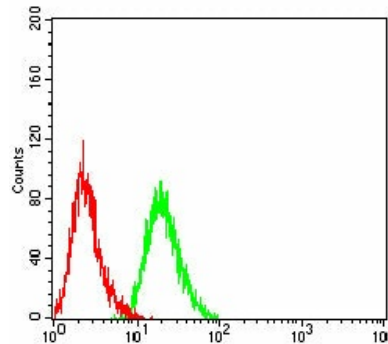
Western blot analysis using CDH1 mouse mAb against A431 (1), LNCap (2), HT-29 (3), PC-3 (4), A549 (5), DU145 (6), and T47D (7) cell lysate.



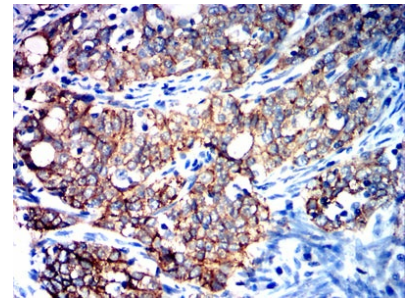
Flow cytometric analysis of HepG2 cells using CDH1 mouse mAb (green) and negative control (red).



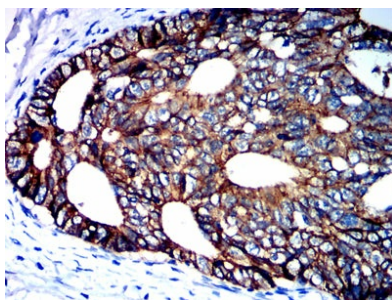
Flow cytometric analysis of HT-29 cells using CDH1 mouse mAb (green) and negative control (red).



Flow cytometric analysis of HeLa cells using CDH1 mouse mAb (green) and negative control (red).



Immunohistochemical analysis of paraffin-embedded human cervical cancer tissues using CDH1 mouse mAb with DAB staining.



Immunohistochemical analysis of paraffin-embedded human rectal cancer tissues using CDH1 mouse mAb with DAB staining.

**For Research Only**

**Application Key:** WB - Western Blot | IHC - Immunohistochemistry | ICC - Immunocytochemistry | FCM - Flow Cytometry | ELISA - Enzyme-linked Immunosorbent Assay | IP - Immunoprecipitation

#32053