

# Mouse Monoclonal Antibody to IGF1R

## Order Information

Catalog#	32052
Size/Concentration	50ul 100ul
Price(¥)	1280 2180

## Description

This receptor binds insulin-like growth factor with a high affinity. It has tyrosine kinase activity. The insulin-like growth factor I receptor plays a critical role in transformation events. Cleavage of the precursor generates alpha and beta subunits. It is highly overexpressed in most malignant tissues where it functions as an anti-apoptotic agent by enhancing cell survival. Alternatively spliced transcript variants encoding distinct isoforms have been found for this gene.

## Specification

Entrez GeneID	3480
Aliases	IGFR; CD221; IGFIR; JTK13
Clone#	3B4E3
MW	154.8kDa
Host/Isotype	Mouse IgG2a
Storage	4°C; -20°C for long term storage. Avoid freeze/thaw cycles.
Species Reactivity	Human
Immunogen	Purified recombinant fragment of human IGF1 R (AA: extra(741-935)) expressed in E. Coli.
Formulation	Purified antibody in PBS with 0.05% sodium azide

## Application

ELISA	1/10000
WB	1/500 - 1/2000
FCM	1/200 - 1/400

## References

- 1, Cells. 2019 Dec 14;8(12):1638.
- 2, Nature. 2020 Jul;583(7817):615-619.






Call 1-510-860-4615  
+86-19375157864  
Email [Info@ProMab.com](mailto:Info@ProMab.com)  
Web [www.ProMab.com](http://www.ProMab.com)  
[www.ProMab.cn](http://www.ProMab.cn)

## Protocol

WB - [www.promab.com/protocol/wb.html](http://www.promab.com/protocol/wb.html)  
IHC - [www.promab.com/protocol/ihc.html](http://www.promab.com/protocol/ihc.html)  
ICC - [www.promab.com/protocol/icc.html](http://www.promab.com/protocol/icc.html)  
HCM - [www.promab.com/protocol/hcm.html](http://www.promab.com/protocol/hcm.html)

**Antigen Sequence** is available upon request.

## Products and Services

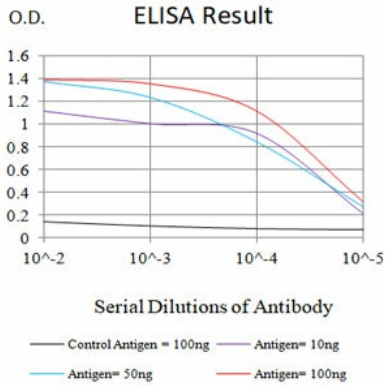
-  Mouse Monoclonal Antibody
-  Rat Monoclonal Antibody
-  Human Antibody
-  Hybridoma Sequencing
-  Polyclonal Antibody

**For Research Only**

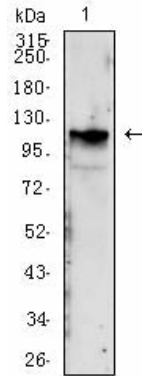
**Application Key:** WB - Western Blot | IHC - Immunohistochemistry | ICC - Immunocytochemistry | FCM - Flow Cytometry | ELISA - Enzyme-linked Immunosorbent Assay | IP - Immunoprecipitation

#32052

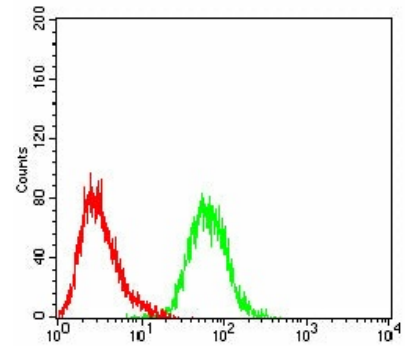
# Mouse Monoclonal Antibody to IGF1R



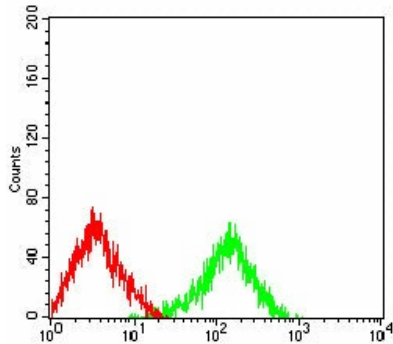
Black line: Control Antigen (100 ng); Purple line: Antigen (10ng); Blue line: Antigen (50 ng); Red line: Antigen (100 ng)



Western blot analysis using IGF1R mouse mAb against NIH3T3 (1), cell lysate.



Flow cytometric analysis of HepG2 cells using IGF1R mouse mAb (green) and negative control (red).



Flow cytometric analysis of Lovo cells using IGF1R mouse mAb (green) and negative control (red).