

# Mouse Monoclonal Antibody to MR1

## Order Information

Catalog#	32051
Size/Concentration	50ul 100ul
Price(¥)	1280 2180

## Description

MAIT (mucosal-associated invariant T-cells) lymphocytes represent a small population of T-cells primarily found in the gut. The protein encoded by this gene is an antigen-presenting molecule that presents metabolites of microbial vitamin B to MAITs. This presentation may activate the MAITs to regulate the amounts of specific types of bacteria in the gut. Several transcript variants encoding different isoforms have been found for this gene, and a pseudogene of it has been detected about 36 kbp upstream on the same chromosome.

## Specification

Entrez GeneID	3140
Aliases	HLALS
Clone#	6A5B2
MW	39.4kDa
Host/Isotype	Mouse IgG2a
Storage	4°C; -20°C for long term storage. Avoid freeze/thaw cycles.
Species Reactivity	Human
Immunogen	Purified recombinant fragment of human MR1 (AA: extra(23-302)) expressed in E. Coli.
Formulation	Purified antibody in PBS with 0.05% sodium azide

## Application

ELISA	1/10000
ICC	1/200 - 1/1000
FCM	1/200 - 1/400
IHC	1/200 - 1/1000

## References






- J Immunol. 2019 Dec 1;203(11):2917-2927.
- Science. 2019 Dec 20;366(6472):1522-1527.

Call 1-510-860-4615  
+86-19375157864  
Email [Info@ProMab.com](mailto:Info@ProMab.com)  
Web [www.ProMab.com](http://www.ProMab.com)  
[www.ProMab.cn](http://www.ProMab.cn)

## Protocol

WB - [www.promab.com/protocol/wb.html](http://www.promab.com/protocol/wb.html)  
IHC - [www.promab.com/protocol/ihc.html](http://www.promab.com/protocol/ihc.html)  
ICC - [www.promab.com/protocol/icc.html](http://www.promab.com/protocol/icc.html)  
HCM - [www.promab.com/protocol/hcm.html](http://www.promab.com/protocol/hcm.html)  
**Antigen Sequence** is available upon request.

## Products and Services

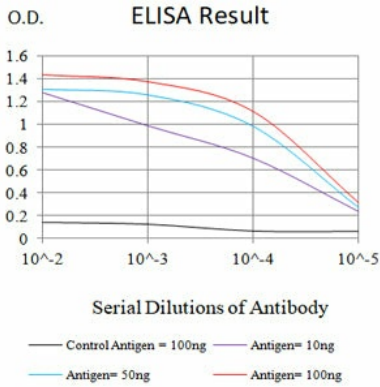
-  Mouse Monoclonal Antibody
-  Rat Monoclonal Antibody
-  Human Antibody
-  Hybridoma Sequencing
-  Polyclonal Antibody

## For Research Only

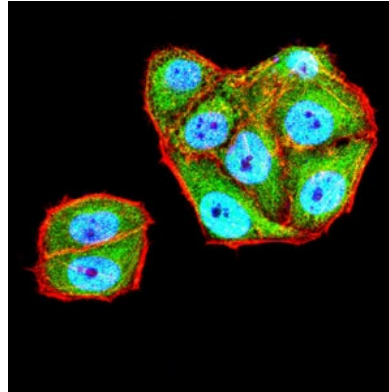
**Application Key:** WB - Western Blot | IHC - Immunohistochemistry | ICC - Immunocytochemistry | FCM - Flow Cytometry | ELISA - Enzyme-linked Immunosorbent Assay | IP - Immunoprecipitation

# #32051

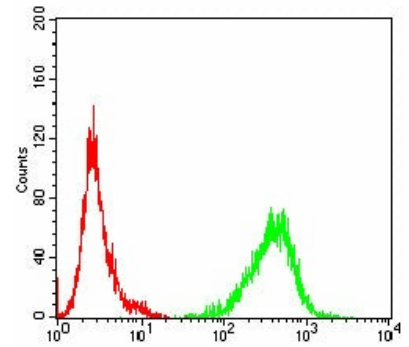
# Mouse Monoclonal Antibody to MR1



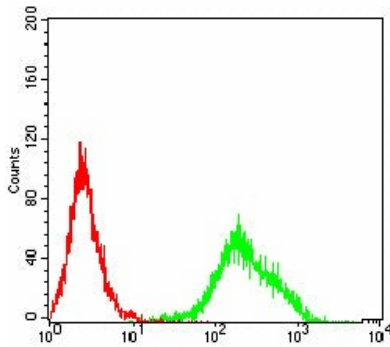
Black line: Control Antigen (100 ng); Purple line: Antigen (10ng); Blue line: Antigen (50 ng); Red line: Antigen (100 ng)



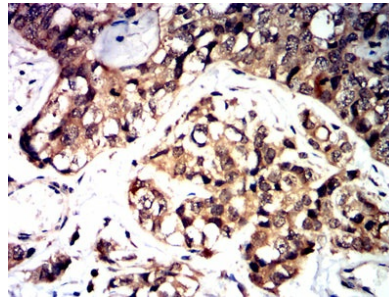
Immunofluorescence analysis of HeLa cells using MR1 mouse mAb (green). Blue: DRAQ5 fluorescent DNA dye. Red: Actin filaments have been labeled with Alexa Fluor- 555 phalloidin. Secondary antibody from Fisher (Cat#: 35503)



Flow cytometric analysis of Jurkat cells using MR1 mouse mAb (green) and negative control (red).



Flow cytometric analysis of THP-1 cells using MR1 mouse mAb (green) and negative control (red).



Immunohistochemical analysis of paraffin-embedded human bladder cancer tissues using MR1 mouse mAb with DAB staining.

**For Research Only**

**Application Key:** WB - Western Blot | IHC - Immunohistochemistry | ICC - Immunocytochemistry | FCM - Flow Cytometry | ELISA - Enzyme-linked Immunosorbent Assay | IP - Immunoprecipitation

#32051