

Mouse Monoclonal Antibody to CD338

Order Information

Catalog#	32050
Size/Concentration	50ul 100ul
Price(¥)	1280 2180

Description

The membrane-associated protein encoded by this gene is included in the superfamily of ATP-binding cassette (ABC) transporters. ABC proteins transport various molecules across extra- and intra-cellular membranes. ABC genes are divided into seven distinct subfamilies (ABC1, MDR/TAP, MRP, ALD, OABP, GCN20, White). This protein is a member of the White subfamily. Alternatively referred to as a breast cancer resistance protein, this protein functions as a xenobiotic transporter which may play a major role in multi-drug resistance. It likely serves as a cellular defense mechanism in response to mitoxantrone and anthracycline exposure. Significant expression of this protein has been observed in the placenta, which may suggest a potential role for this molecule in placenta tissue. Multiple transcript variants encoding different isoforms have been found for this gene.

Specification

Entrez GeneID	9429
Aliases	MRX; MXR; ABCP; BCRP; BMDP; MXR1; ABC15; BCRP1; ABCG2; GOUT1; MXR-1; CDw338; UAQTL1; EST157481
Clone#	4H3C10
MW	75kDa
Host/Isotype	Mouse IgG2b
Storage	4°C; -20°C for long term storage. Avoid freeze/thaw cycles.
Species Reactivity	Human, Mouse
Immunogen	Purified recombinant fragment of human CD338 (AA: extra mix) expressed in E. Coli.
Formulation	Purified antibody in PBS with 0.05% sodium azide

Application

ELISA	1/10000
WB	1/500 - 1/2000
ICC	1/200 - 1/1000
FCM	1/200 - 1/400
IHC	1/200 - 1/1000

References

- 1, Nat Commun. 2020 May 8;11(1):2264.
- 2, J Neuropathol Exp Neurol. 2020 Mar 1;79(3):266-276.

Call 1-510-860-4615
+86-19375157864
Email Info@ProMab.com
Web www.ProMab.com
www.ProMab.cn

Protocol

WB - www.promab.com/protocol/wb.html
IHC - www.promab.com/protocol/ihc.html
ICC - www.promab.com/protocol/icc.html
HCM - www.promab.com/protocol/hcm.html

Antigen Sequence is available upon request.

Products and Services

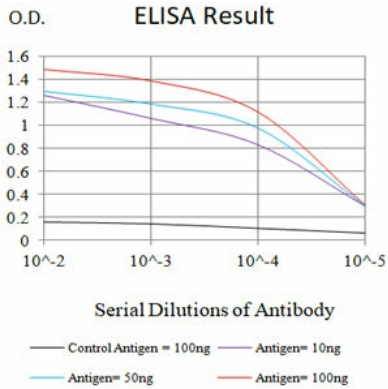
- Mouse Monoclonal Antibody
- Rat Monoclonal Antibody
- Human Antibody
- Hybridoma Sequencing
- Polyclonal Antibody

For Research Only

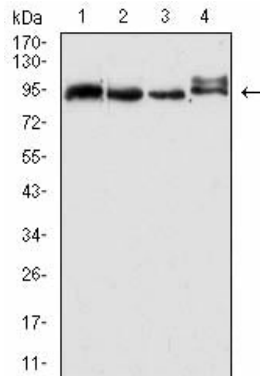
Application Key: WB - Western Blot | IHC - Immunohistochemistry | ICC - Immunocytochemistry | FCM - Flow Cytometry | ELISA - Enzyme-linked Immunosorbent Assay | IP - Immunoprecipitation

#32050

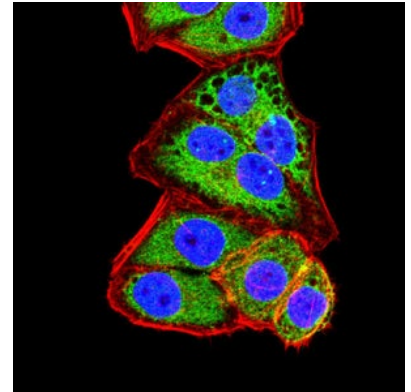
Mouse Monoclonal Antibody to CD338



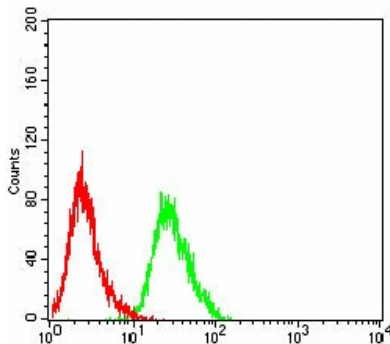
Black line: Control Antigen (100 ng); Purple line: Antigen (10ng); Blue line: Antigen (50 ng); Red line: Antigen (100 ng)



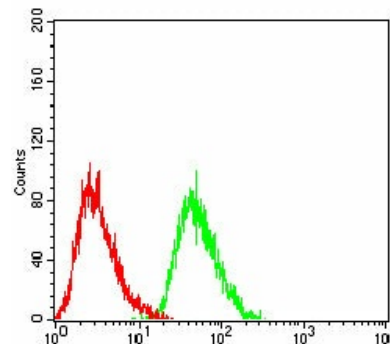
Western blot analysis using CD338 mouse mAb against A549 (1), HePG2 (2), HeLa (3), and NIH/3T3 (4) cell lysate.



Immunofluorescence analysis of HeLa cells using CD338 mouse mAb (green). Blue: DRAQ5 fluorescent DNA dye. Red: Actin filaments have been labeled with Alexa Fluor- 555 phalloidin. Secondary antibody from Fisher (Cat#: 35503)



Flow cytometric analysis of HeLa cells using CD338 mouse mAb (green) and negative control (red).



Flow cytometric analysis of HePG2 cells using CD338 mouse mAb (green) and negative control (red).

For Research Only

Application Key: WB - Western Blot | IHC - Immunohistochemistry | ICC - Immunocytochemistry | FCM - Flow Cytometry | ELISA - Enzyme-linked Immunosorbent Assay | IP - Immunoprecipitation

#32050