

# Mouse Monoclonal Antibody to siglec15

## Order Information

Catalog#	32049
Size/Concentration	50ul 100ul
Price(¥)	1280 2180

## Description

SIGLEC15 (Sialic Acid Binding Ig Like Lectin 15) is a Protein Coding gene. Diseases associated with SIGLEC15 include Osteoporosis, Juvenile and Osteoporosis. Among its related pathways are Innate Immune System and RET signaling. An important paralog of this gene is SIGLEC1.

## Specification

Entrez GeneID	284266
Aliases	CD33L3; HsT1361; SIGLEC-15
Clone#	3C9C3
MW	35.7kDa
Host/Isotype	Mouse IgG1
Storage	4°C; -20°C for long term storage. Avoid freeze/thaw cycles.
Species Reactivity	Human, Monkey
Immunogen	Purified recombinant fragment of human Siglec15 (AA: Extra(20-263)) expressed in Mammalian cells.
Formulation	Purified antibody in PBS with 0.05% sodium azide

## Application

ELISA	1/10000
WB	1/500 - 1/2000
ICC	1/200 - 1/1000
FCM	1/200 - 1/400
IHC	1/200 - 1/1000

## References






- 1, J Biomed Sci. 2020 Jan 3;27(1):10.
- 2, Glycobiology. 2013 Feb;23(2):178-87.

Call 1-510-860-4615  
+86-19375157864  
Email [Info@ProMab.com](mailto:Info@ProMab.com)  
Web [www.ProMab.com](http://www.ProMab.com)  
[www.ProMab.cn](http://www.ProMab.cn)

## Protocol

WB - [www.promab.com/protocol/wb.html](http://www.promab.com/protocol/wb.html)  
IHC - [www.promab.com/protocol/ihc.html](http://www.promab.com/protocol/ihc.html)  
ICC - [www.promab.com/protocol/icc.html](http://www.promab.com/protocol/icc.html)  
HCM - [www.promab.com/protocol/hcm.html](http://www.promab.com/protocol/hcm.html)  
**Antigen Sequence** is available upon request.

## Products and Services

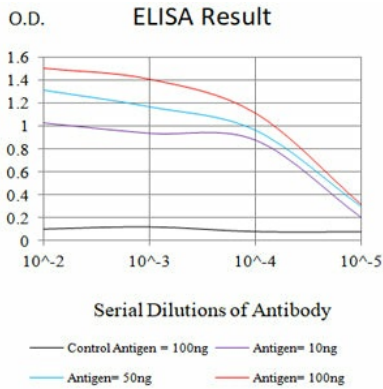
-  Mouse Monoclonal Antibody
-  Rat Monoclonal Antibody
-  Human Antibody
-  Hybridoma Sequencing
-  Polyclonal Antibody

**For Research Only**

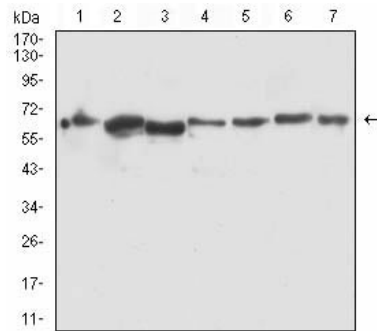
**Application Key:** WB - Western Blot | IHC - Immunohistochemistry | ICC - Immunocytochemistry | FCM - Flow Cytometry | ELISA - Enzyme-linked Immunosorbent Assay | IP - Immunoprecipitation

#32049

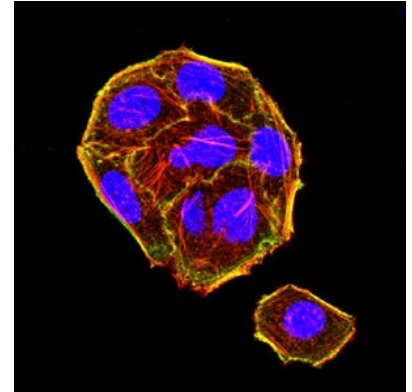
# Mouse Monoclonal Antibody to siglec15



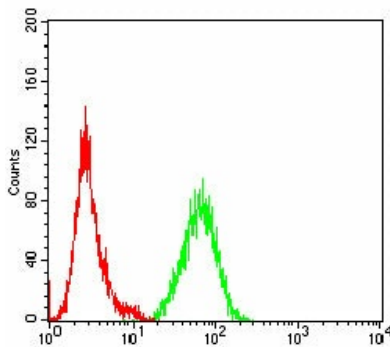
Black line: Control Antigen (100 ng); Purple line: Antigen (10ng); Blue line: Antigen (50 ng); Red line: Antigen (100 ng)



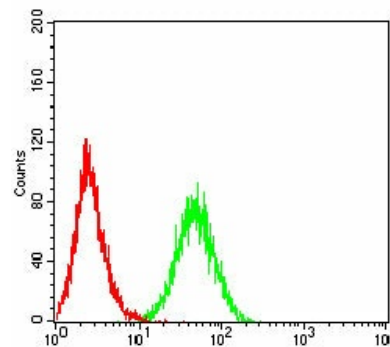
Western blot analysis using Siglec15 mouse mAb against PC-2 (1), LNCap (2), HEK293 (3), PC-3 (4), DU145 (5), COS-7 (6), and HEK293-6e (7) cell lysate.



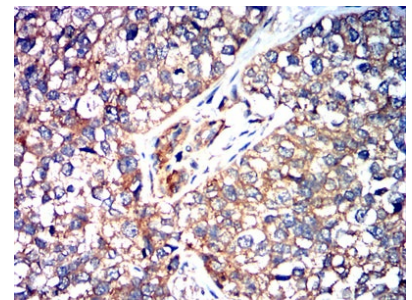
Immunofluorescence analysis of HeLa cells using Siglec15 mouse mAb (green). Blue: DRAQ5 fluorescent DNA dye. Red: Actin filaments have been labeled with Alexa Fluor- 555 phalloidin. Secondary antibody from Fisher (Cat#: 35503)



Flow cytometric analysis of Jurkat cells using Siglec15 mouse mAb (green) and negative control (red).



Flow cytometric analysis of THP-1 cells using Siglec15 mouse mAb (green) and negative control (red).



Immunohistochemical analysis of paraffin-embedded human bladder cancer tissues using Siglec15 mouse mAb with DAB staining.