

Mouse Monoclonal Antibody to CD327

Order Information

Catalog#	31534
Size/Concentration	50ul 100ul
Price(¥)	1280 2180

Description

This gene encodes a member of the SIGLEC (sialic acid binding immunoglobulin-like lectin) family of proteins. The encoded transmembrane receptor binds sialyl-TN glycans and leptin. Placental expression of the encoded protein is upregulated in preeclampsia.

Specification

Entrez GeneID	946
Aliases	SIGLEC6; CD33L; OBBP1; CD33L1; CD33L2; CDW327
Clone#	3C11C12G1
MW	50kDa
Host/Isotype	Mouse IgG2b
Storage	4°C; -20°C for long term storage. Avoid freeze/thaw cycles.
Species Reactivity	Human
Immunogen	Purified recombinant fragment of human CD327 (AA: extra 27-347) expressed in E. Coli.
Formulation	Purified antibody in PBS with 0.05% sodium azide

Application

ELISA	1/10000
FCM	1/200 - 1/400
IHC	1/200 - 1/1000

References

- 1.Reprod Sci. 2013 Jun;20(6):646-53.
- 2.Endocr Relat Cancer. 2012 Nov 19;19(6):827-40.






Call 1-510-860-4615
+86-19375157864
Email Info@ProMab.com
Web www.ProMab.com
www.ProMab.cn

Protocol

WB - www.promab.com/protocol/wb.html
IHC - www.promab.com/protocol/ihc.html
ICC - www.promab.com/protocol/icc.html
HCM - www.promab.com/protocol/hcm.html

Antigen Sequence is available upon request.

Products and Services

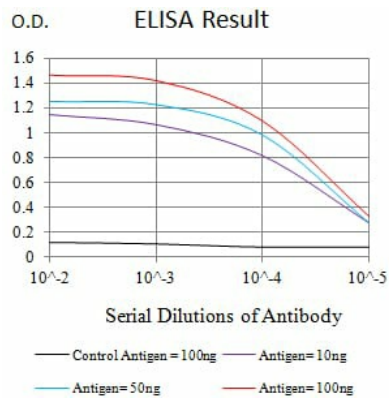
-  Mouse Monoclonal Antibody
-  Rat Monoclonal Antibody
-  Human Antibody
-  Hybridoma Sequencing
-  Polyclonal Antibody

For Research Only

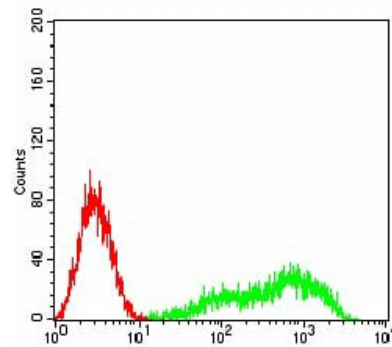
Application Key: WB - Western Blot | IHC - Immunohistochemistry | ICC - Immunocytochemistry | FCM - Flow Cytometry | ELISA - Enzyme-linked Immunosorbent Assay | IP - Immunoprecipitation

#31534

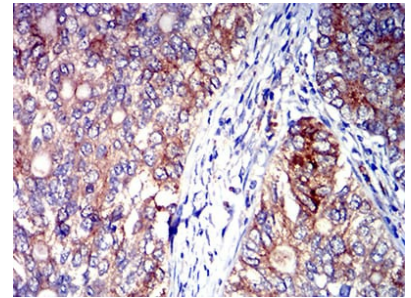
Mouse Monoclonal Antibody to CD327



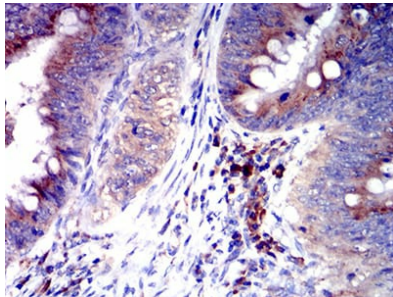
Black line: Control Antigen (100 ng); Purple line: Antigen (10ng); Blue line: Antigen (50 ng); Red line: Antigen (100 ng)



Flow cytometric analysis of HL-60 cells using CD327 mouse mAb (green) and negative control (red).



Immunohistochemical analysis of paraffin-embedded human cervical cancer tissues using CD327 mouse mAb with DAB staining.



Immunohistochemical analysis of paraffin-embedded human rectum cancer tissues using CD327 mouse mAb with DAB staining.

For Research Only

Application Key: WB - Western Blot | IHC - Immunohistochemistry | ICC - Immunocytochemistry | FCM - Flow Cytometry | ELISA - Enzyme-linked Immunosorbent Assay | IP - Immunoprecipitation

#31534