

Mouse Monoclonal Antibody to PLD2

Order Information

Catalog#	31024
Size/Concentration	50ul 100µl
Price(¥)	1280 2180

Description

The protein encoded by this gene catalyzes the hydrolysis of phosphatidylcholine to phosphatidic acid and choline. The activity of the encoded enzyme is enhanced by phosphatidylinositol 4,5-bisphosphate and ADP-ribosylation factor-1. This protein localizes to the peripheral membrane and may be involved in cytoskeletal organization, cell cycle control, transcriptional regulation, and/or regulated secretion. Two transcript variants encoding different isoforms have been found for this gene.

Specification

Entrez GeneID	5338
Clone#	7E4D9
MW	106kDa
Host/Isotype	Mouse IgG1
Storage	4°C; -20°C for long term storage. Avoid freeze/thaw cycles.
Species Reactivity	Human
Immunogen	Purified recombinant fragment of human PLD 2 (AA: 834-933) expressed in E. Coli.
Formulation	Purified antibody in PBS with 0.05% sodium azide

Application

ELISA	1/10000
ICC	1/200 - 1/1000
FCM	1/200 - 1/400
IHC	1/200 - 1/1000

References

1. Exp Mol Med. 2014 Dec 5;46:e124.
2. FEBS Lett. 2014 Aug 25;588(17):3251-8.






Call 1-510-860-4615
+86-19375157864
Email Info@ProMab.com
Web www.ProMab.com
www.ProMab.cn

Protocol

WB - www.promab.com/protocol/wb.html
IHC - www.promab.com/protocol/ihc.html
ICC - www.promab.com/protocol/icc.html
HCM - www.promab.com/protocol/hcm.html

Antigen Sequence is available upon request.

Products and Services

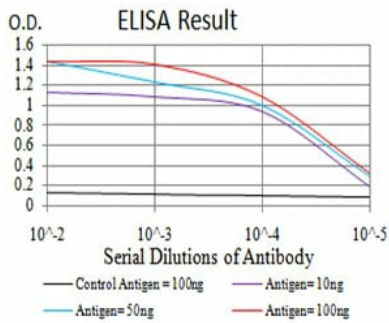
-  Mouse Monoclonal Antibody
-  Rat Monoclonal Antibody
-  Human Antibody
-  Hybridoma Sequencing
-  Polyclonal Antibody

For Research Only

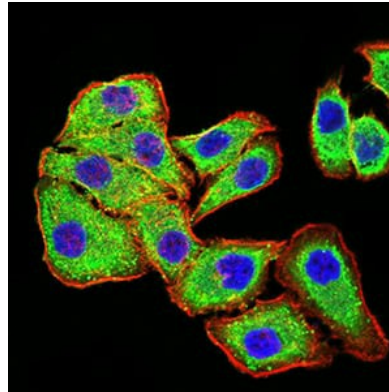
Application Key: WB - Western Blot | IHC - Immunohistochemistry | ICC - Immunocytochemistry | FCM - Flow Cytometry | ELISA - Enzyme-linked Immunosorbent Assay | IP - Immunoprecipitation

#31024

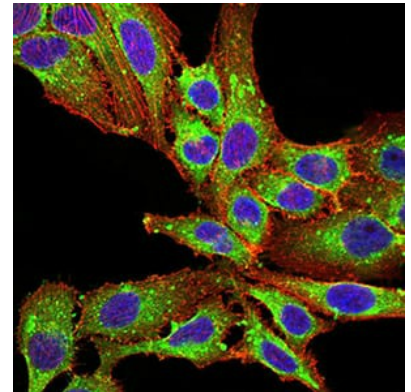
Mouse Monoclonal Antibody to PLD2



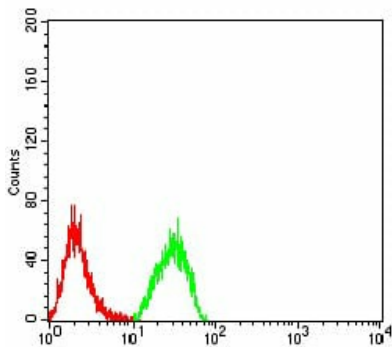
Black line: Control Antigen (100 ng); Purple line: Antigen (10ng); Blue line: Antigen (50 ng); Red line: Antigen (100 ng)



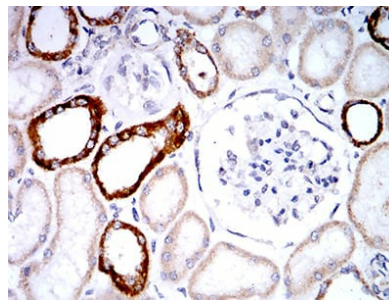
Immunofluorescence analysis of MCF-7 cells using PLD2 mouse mAb (green). Blue: DRAQ5 fluorescent DNA dye. Red: Actin filaments have been labeled with Alexa Fluor- 555 phalloidin. Secondary antibody from Fisher (Cat#: 35503)



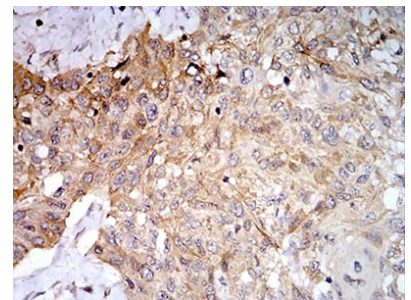
Immunofluorescence analysis of SK-OV-3 cells using PLD2 mouse mAb (green). Blue: DRAQ5 fluorescent DNA dye. Red: Actin filaments have been labeled with Alexa Fluor- 555 phalloidin. Secondary antibody from Fisher (Cat#: 35503)



Flow cytometric analysis of HeLa cells using PLD2 mouse mAb (green) and negative control (red).



Immunohistochemical analysis of paraffin-embedded human renal tissues using PLD2 mouse mAb with DAB staining.



Immunohistochemical analysis of paraffin-embedded human esophageal cancer tissues using PLD2 mouse mAb with DAB staining.