

# Mouse Monoclonal Antibody to LGALS1

## Order Information

Catalog#	31021
Size/Concentration	50ul 100µl
Price(¥)	1280 2180

## Description

The galectins are a family of beta-galactoside-binding proteins implicated in modulating cell-cell and cell-matrix interactions. This gene product may act as an autocrine negative growth factor that regulates cell proliferation.

## Specification

Entrez GeneID	3956
Aliases	GBP; GAL1
Clone#	1H11C5
MW	14.7kDa
Host/Isotype	Mouse IgG1
Storage	4°C; -20°C for long term storage. Avoid freeze/thaw cycles.
Species Reactivity	Human
Immunogen	Purified recombinant fragment of human LGA LS1 (AA: 1-135) expressed in E. Coli.
Formulation	Purified antibody in PBS with 0.05% sodium azide

## Application

ELISA	1/10000
FCM	1/200 - 1/400
IHC	1/200 - 1/1000

## References

- 1.Cancer Sci. 2014 Nov;105(11):1402-10.
- 2.Lung Cancer. 2014 Apr;84(1):73-8.






Call 1-510-860-4615  
+86-19375157864  
Email [Info@ProMab.com](mailto:Info@ProMab.com)  
Web [www.ProMab.com](http://www.ProMab.com)  
[www.ProMab.cn](http://www.ProMab.cn)

## Protocol

WB - [www.promab.com/protocol/wb.html](http://www.promab.com/protocol/wb.html)  
IHC - [www.promab.com/protocol/ihc.html](http://www.promab.com/protocol/ihc.html)  
ICC - [www.promab.com/protocol/icc.html](http://www.promab.com/protocol/icc.html)  
HCM - [www.promab.com/protocol/hcm.html](http://www.promab.com/protocol/hcm.html)

**Antigen Sequence** is available upon request.

## Products and Services

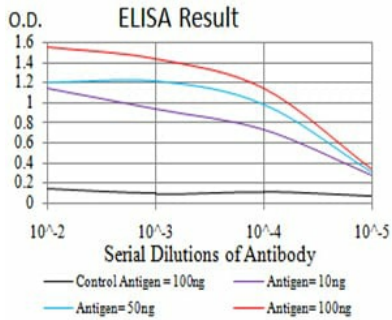
-  Mouse Monoclonal Antibody
-  Rat Monoclonal Antibody
-  Human Antibody
-  Hybridoma Sequencing
-  Polyclonal Antibody

**For Research Only**

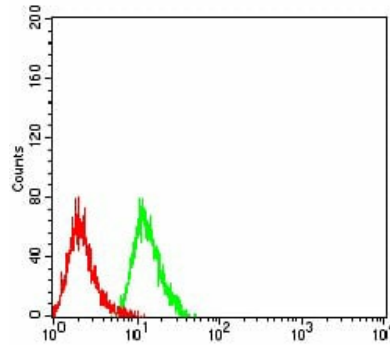
**Application Key:** WB - Western Blot | IHC - Immunohistochemistry | ICC - Immunocytochemistry | FCM - Flow Cytometry | ELISA - Enzyme-linked Immunosorbent Assay | IP - Immunoprecipitation

#31021

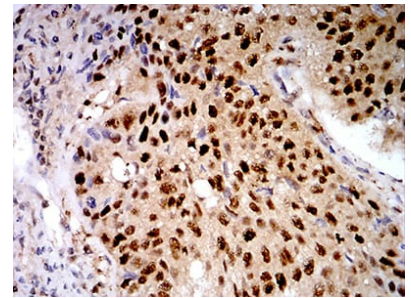
# Mouse Monoclonal Antibody to LGALS1



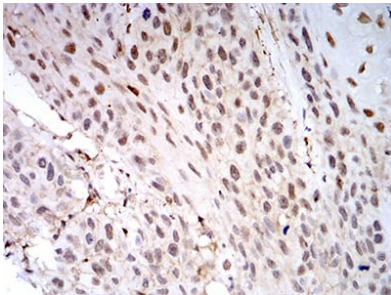
Black line: Control Antigen (100 ng); Purple line: Antigen (10ng); Blue line: Antigen (50 ng); Red line: Antigen (100 ng)



Flow cytometric analysis of HeLa cells using LGALS1 mouse mAb (green) and negative control (red).



Immunohistochemical analysis of paraffin-embedded human lung cancer tissues using LGALS1 mouse mAb with DAB staining.



Immunohistochemical analysis of paraffin-embedded human esophageal cancer tissues using LGALS1 mouse mAb with DAB staining.