

Mouse Monoclonal Antibody to TIP60

Order Information

Catalog#	30766
Size/Concentration	50ul 100µl
Price(¥)	1280 2180

Description

The protein encoded by this gene belongs to the MYST family of histone acetyl transferases (HATs) and was originally isolated as an HIV-1 TAT-interactive protein. HATs play important roles in regulating chromatin remodeling, transcription and other nuclear processes by acetylating histone and nonhistone proteins. This protein is a histone acetylase that has a role in DNA repair and apoptosis and is thought to play an important role in signal transduction. Alternative splicing of this gene results in multiple transcript variants.

Specification

Entrez GeneID	10524
Aliases	TIP; ESA1; PLIP; KAT5; cPLA2; HTATIP; ZC2HC5; HTATIP1
Clone#	2A11H7
MW	58.6kDa
Host/Isotype	Mouse IgG1
Storage	4°C; -20°C for long term storage. Avoid freeze/thaw cycles.
Species Reactivity	Human
Immunogen	Purified recombinant fragment of human TIP60 (AA: 18-208) expressed in E. Coli.
Formulation	Purified antibody in PBS with 0.05% sodium azide

Application

ELISA	1/10000
WB	1/500 - 1/2000
FCM	1/200 - 1/400

References

Anticancer Res. 2011 Jan;31(1):77-9.
J Invest Dermatol. 2012 Nov;132(11):2632-41.






Call 1-510-860-4615
+86-19375157864
Email Info@ProMab.com
Web www.ProMab.com
www.ProMab.cn

Protocol

WB - www.promab.com/protocol/wb.html
IHC - www.promab.com/protocol/ihc.html
ICC - www.promab.com/protocol/icc.html
HCM - www.promab.com/protocol/hcm.html

Antigen Sequence is available upon request.

Products and Services

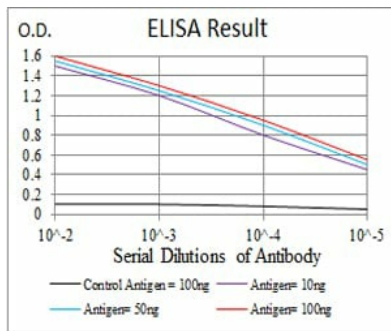
-  Mouse Monoclonal Antibody
-  Rat Monoclonal Antibody
-  Human Antibody
-  Hybridoma Sequencing
-  Polyclonal Antibody

For Research Only

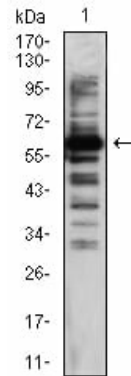
Application Key: WB - Western Blot | IHC - Immunohistochemistry | ICC - Immunocytochemistry | FCM - Flow Cytometry | ELISA - Enzyme-linked Immunosorbent Assay | IP - Immunoprecipitation

#30766

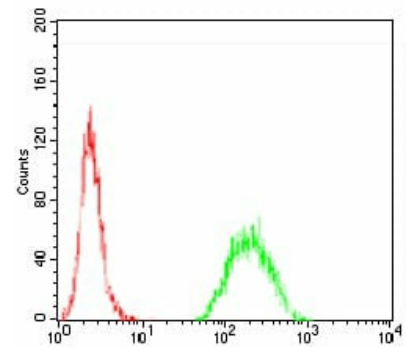
Mouse Monoclonal Antibody to TIP60



Black line: Control Antigen (100 ng);
Purple line: Antigen(10ng); Blue line:
Antigen (50 ng); Red line: Antigen
(100 ng);



Western blot analysis using TIP60 mouse mAb against HeLa (1) cell lysate.



Flow cytometric analysis of HeLa cells using TIP60 mouse mAb (green) and negative control (red).

For Research Only

Application Key: WB - Western Blot | IHC - Immunohistochemistry | ICC - Immunocytochemistry | FCM - Flow Cytometry | ELISA - Enzyme-linked Immunosorbent Assay | IP - Immunoprecipitation

#30766