

# Mouse Monoclonal Antibody to MAP3K7

## Order Information

Catalog#	30765
Size/Concentration	50ul 100ul
Price(¥)	1280 2180

## Description

The protein encoded by this gene is a member of the serine/threonine protein kinase family. This kinase mediates the signaling transduction induced by TGF beta and morphogenetic protein (BMP), and controls a variety of cell functions including transcription regulation and apoptosis. In response to IL-1, this protein forms a kinase complex including TRAF6, MAP3K7P1/TAB1 and MAP3K7P2/TAB2; this complex is required for the activation of nuclear factor kappa B. This kinase can also activate MAPK8/JNK, MAP2K4/MKK4, and thus plays a role in the cell response to environmental stresses. Four alternatively spliced transcript variants encoding distinct isoforms have been reported.

## Specification

Entrez GeneID	6885
Aliases	TAK1; MEKK7; TGF1a
Clone#	3E8H4
MW	67.2kDa
Host/Isotype	Mouse IgG2a
Storage	4°C; -20°C for long term storage. Avoid freeze/thaw cycles.
Species Reactivity	Human
Immunogen	Purified recombinant fragment of human MAP 3K7 (AA: 471-579) expressed in E. Coli.
Formulation	Purified antibody in PBS with 0.05% sodium azide and 0.5% protein stabilizer

## Application

ELISA	1/10000
-------	---------

## References

Asian Pac J Cancer Prev. 2013;14(1):315-20.  
Blood. 2012 Jul 12;120(2):347-55.






Call 1-510-860-4615  
+86-19375157864  
Email [Info@ProMab.com](mailto:Info@ProMab.com)  
Web [www.ProMab.com](http://www.ProMab.com)  
[www.ProMab.cn](http://www.ProMab.cn)

## Protocol

WB - [www.promab.com/protocol/wb.html](http://www.promab.com/protocol/wb.html)  
IHC - [www.promab.com/protocol/ihc.html](http://www.promab.com/protocol/ihc.html)  
ICC - [www.promab.com/protocol/icc.html](http://www.promab.com/protocol/icc.html)  
HCM - [www.promab.com/protocol/hcm.html](http://www.promab.com/protocol/hcm.html)

**Antigen Sequence** is available upon request.

## Products and Services

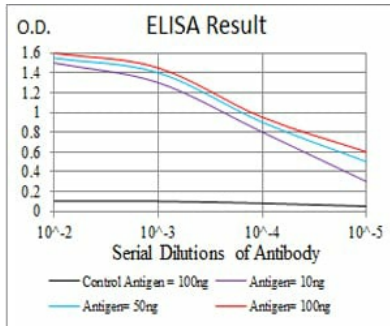
-  Mouse Monoclonal Antibody
-  Rat Monoclonal Antibody
-  Human Antibody
-  Hybridoma Sequencing
-  Polyclonal Antibody

**For Research Only**

**Application Key:** **WB** - Western Blot | **IHC** - Immunohistochemistry | **ICC** - Immunocytochemistry | **FCM** - Flow Cytometry | **ELISA** - Enzyme-linked Immunosorbent Assay | **IP** - Immunoprecipitation

#30765

## Mouse Monoclonal Antibody to MAP3K7



Black line: Control Antigen (100 ng);  
Purple line: Antigen(10ng); Blue line:  
Antigen (50 ng); Red line: Antigen  
(100 ng);