

Mouse Monoclonal Antibody to ADD1

Order Information

Catalog#	30763
Size/Concentration	50ul 100µl
Price(¥)	1280 2180

Description

Adducins are a family of cytoskeleton proteins encoded by three genes (alpha, beta, gamma). Adducin is a heterodimeric protein that consists of related subunits, which are produced from distinct genes but share a similar structure. Alpha- and beta-adducin include a protease-resistant N-terminal region and a protease-sensitive, hydrophilic C-terminal region. Alpha- and gamma-adducins are ubiquitously expressed. In contrast, beta-adducin is expressed at high levels in brain and hematopoietic tissues. Adducin binds with high affinity to Ca(2+)/calmodulin and is a substrate for protein kinases A and C. Alternative splicing results in multiple variants encoding distinct isoforms; however, not all variants have been fully described.

Specification

Entrez GeneID	118
Aliases	ADDA
Clone#	5D4H1
MW	81kDa
Host/Isotype	Mouse IgG1
Storage	4°C; -20°C for long term storage. Avoid freeze/thaw cycles.
Species Reactivity	Human
Immunogen	Purified recombinant fragment of human ADD 1 (AA: 1-193) expressed in E. Coli.
Formulation	Purified antibody in PBS with 0.05% sodium azide

Application

ELISA	1/10000
IHC	1/200 - 1/1000

References

EMBO J. 2012 Mar 21;31(6):1453-66.
Traffic. 2011 Oct;12(10):1327-40.






Call 1-510-860-4615
+86-19375157864
Email Info@ProMab.com
Web www.ProMab.com
www.ProMab.cn

Protocol

WB - www.promab.com/protocol/wb.html
IHC - www.promab.com/protocol/ihc.html
ICC - www.promab.com/protocol/icc.html
HCM - www.promab.com/protocol/hcm.html

Antigen Sequence is available upon request.

Products and Services

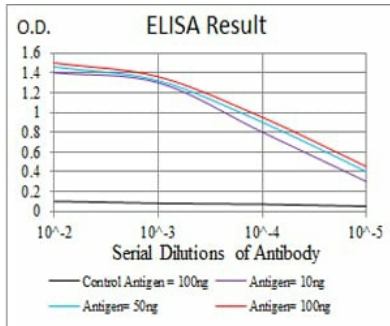
-  Mouse Monoclonal Antibody
-  Rat Monoclonal Antibody
-  Human Antibody
-  Hybridoma Sequencing
-  Polyclonal Antibody

For Research Only

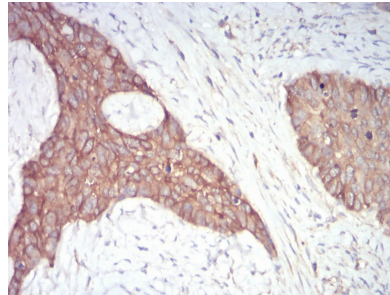
Application Key: WB - Western Blot | IHC - Immunohistochemistry | ICC - Immunocytochemistry | FCM - Flow Cytometry | ELISA - Enzyme-linked Immunosorbent Assay | IP - Immunoprecipitation

#30763

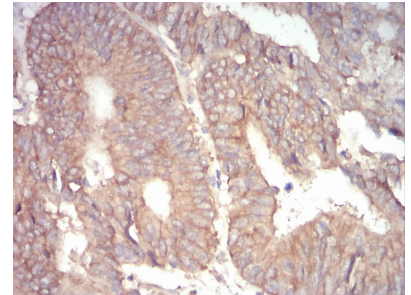
Mouse Monoclonal Antibody to ADD1



Black line: Control Antigen (100 ng);
Purple line: Antigen(10ng); Blue line:
Antigen (50 ng); Red line: Antigen
(100 ng);



Immunohistochemical analysis of
paraffin-embedded human cervical
cancer tissues using 1-193 mouse
mAb with DAB staining.



Immunohistochemical analysis of
paraffin-embedded human rectum
cancer tissues using 1-193 mouse
mAb with DAB staining.

For Research Only

Application Key: WB - Western Blot | IHC - Immunohistochemistry | ICC - Immunocytochemistry |
FCM - Flow Cytometry | ELISA - Enzyme-linked Immunosorbent Assay | IP - Immunoprecipitation

#30763