

Mouse Monoclonal Antibody to BRCA1

Order Information

Catalog#	30509
Size/Concentration	50ul 100µl
Price(¥)	1280 2180

Description

This gene encodes a nuclear phosphoprotein that plays a role in maintaining genomic stability, and it also acts as a tumor suppressor. The encoded protein combines with other tumor suppressors, DNA damage sensors, and signal transducers to form a large multi-subunit protein complex known as the BRCA1-associated genome surveillance complex (BASC). This gene product associates with RNA polymerase II, and through the C-terminal domain, also interacts with histone deacetylase complexes. This protein thus plays a role in transcription, DNA repair of double-stranded breaks, and recombination. Mutations in this gene are responsible for approximately 40% of inherited breast cancers and more than 80% of inherited breast and ovarian cancers. Alternative splicing plays a role in modulating the subcellular localization and physiological function of this gene. Many alternatively spliced transcript variants, some of which are disease-associated mutations, have been described for this gene, but the full-length nature of only some of these variants has been described. A related pseudogene, which is also located on chromosome 17, has been identified.

Specification

Entrez GeneID	672
Aliases	IRIS; PSCP; BRCA1; BRCC1; PNCA4; RNF53 ; BROVCA1; PPP1R53
Clone#	6C6D2
MW	207.7kDa
Host/Isotype	Mouse IgG1
Storage	4°C; -20°C for long term storage. Avoid freeze /thaw cycles.
Species Reactivity	Human
Immunogen	Purified recombinant fragment of human BRCA1 (AA: 229-335) expressed in E. Coli.
Formulation	Purified antibody in PBS with 0.05% sodium azide

Application

ELISA	1/10000
IHC	1/200 - 1/1000

References

1. Cancer Res. 2013 Jan 15;73(2):706-15.
2. J Biol Chem. 2012 Nov 23;287(48):40618-28.






Call 1-510-860-4615
+86-19375157864
Email Info@ProMab.com
Web www.ProMab.com
www.ProMab.cn

Protocol

WB - www.promab.com/protocol/wb.html
IHC - www.promab.com/protocol/ihc.html
ICC - www.promab.com/protocol/icc.html
HCM - www.promab.com/protocol/hcm.html

Antigen Sequence is available upon request.

Products and Services

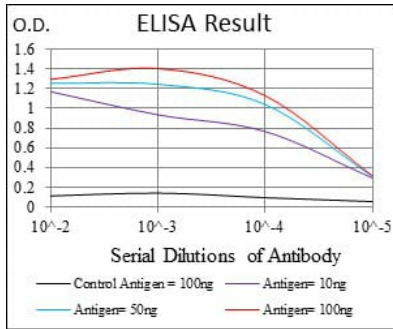
-  Mouse Monoclonal Antibody
-  Rat Monoclonal Antibody
-  Human Antibody
-  Hybridoma Sequencing
-  Polyclonal Antibody

For Research Only

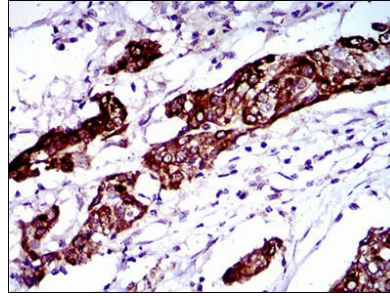
Application Key: WB - Western Blot | IHC - Immunohistochemistry | ICC - Immunocytochemistry | FCM - Flow Cytometry | ELISA - Enzyme-linked Immunosorbent Assay | IP - Immunoprecipitation

#30509

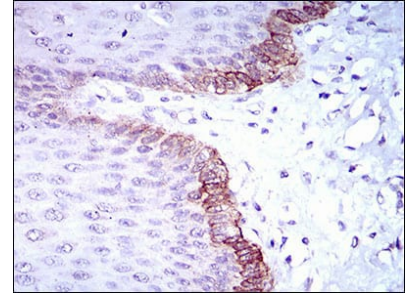
Mouse Monoclonal Antibody to BRCA1



Black line: Control Antigen (100 ng);
Purple line: Antigen(10ng); Blue line:
Antigen (50 ng); Red line: Antigen
(100 ng);



Immunohistochemical analysis of
paraffin-embedded human
esophagus cancer tissues using
BRCA1 mouse mAb with DAB
staining.



Immunohistochemical analysis of
paraffin-embedded human
esophagus tissues using BRCA1
mouse mAb with DAB staining.