

Mouse Monoclonal Antibody to ACP5

Order Information

Catalog#	30508
Size/Concentration	50ul 100µl
Price(¥)	1280 2180

Description

This gene encodes an iron containing glycoprotein which catalyzes the conversion of orthophosphoric monoester to alcohol and orthophosphate. It is the most basic of the acid phosphatases and is the only form not inhibited by L(+)-tartrate.

Specification

Entrez GeneID	54
Aliases	TRAP; SPENCDI
Clone#	5C5E7
MW	36.6kDa
Host/Isotype	Mouse IgG1
Storage	4°C; -20°C for long term storage. Avoid freeze/thaw cycles.
Species Reactivity	Human
Immunogen	Purified recombinant fragment of human ACP 5 (AA: 221-325) expressed in E. Coli.
Formulation	Purified antibody in PBS with 0.05% sodium azide

Application

ELISA	1/10000
WB	1/500 - 1/2000
FCM	1/200 - 1/400

References

1. Clin Chim Acta. 2011 May 12;412(11-12):963-9.
2. Eur J Gynaecol Oncol. 2011;32(6):615-8.






Call 1-510-860-4615
+86-19375157864
Email Info@ProMab.com
Web www.ProMab.com
www.ProMab.cn

Protocol

WB - www.promab.com/protocol/wb.html
IHC - www.promab.com/protocol/ihc.html
ICC - www.promab.com/protocol/icc.html
HCM - www.promab.com/protocol/hcm.html

Antigen Sequence is available upon request.

Products and Services

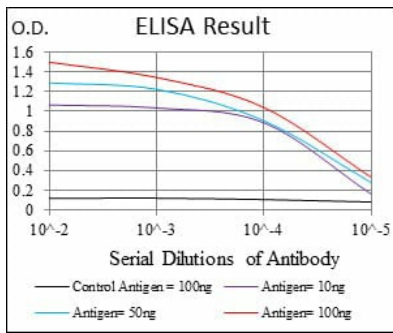
-  Mouse Monoclonal Antibody
-  Rat Monoclonal Antibody
-  Human Antibody
-  Hybridoma Sequencing
-  Polyclonal Antibody

For Research Only

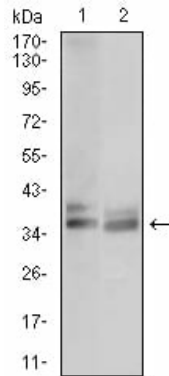
Application Key: WB - Western Blot | IHC - Immunohistochemistry | ICC - Immunocytochemistry | FCM - Flow Cytometry | ELISA - Enzyme-linked Immunosorbent Assay | IP - Immunoprecipitation

#30508

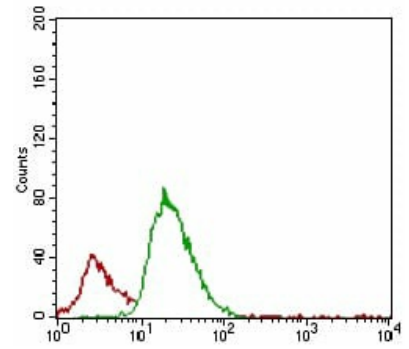
Mouse Monoclonal Antibody to ACP5



Black line: Control Antigen (100 ng);
Purple line: Antigen(10ng); Blue line:
Antigen (50 ng); Red line: Antigen
(100 ng);



Western blot analysis using ACP5 mouse mAb against JURKAT (1) and OCM-1 (2) cell lysate.



Flow cytometric analysis of JURKAT cells using ACP5 mouse mAb (green) and negative control (red).