

Mouse Monoclonal Antibody to MCAM

Order Information

Catalog#	30505
Size/Concentration	50ul 100µl
Price(¥)	1280 2180

Description

The protein encoded by this gene plays a role in cell adhesion, and in cohesion of the endothelial monolayer at intercellular junctions in vascular tissue. Its expression may allow melanoma cells to interact with cellular elements of the vascular system, thereby enhancing hematogeneous tumor spread. Could be an adhesion molecule active in neural crest cells during embryonic development. Acts as surface receptor that triggers tyrosine phosphorylation of FYN and PTK2/FAK1, and a transient increase in the intracellular calcium concentration.

Specification

Entrez GeneID	4162
Aliases	CD146; MUC18
Clone#	6C3E6
MW	71.6kDa
Host/Isotype	Mouse IgG1
Storage	4°C; -20°C for long term storage. Avoid freeze/thaw cycles.
Species Reactivity	Human
Immunogen	Purified recombinant fragment of human MCA M (AA: 84-189) expressed in E. Coli.
Formulation	Purified antibody in PBS with 0.05% sodium azide

Application

ELISA	1/10000
WB	1/500 - 1/2000
FCM	1/200 - 1/400
IHC	1/200 - 1/1000

References

1. Cancer Lett. 2013 Apr 28;330(2):150-62.
2. J Biol Chem. 2013 Jan 25;288(4):2571-9.






Call 1-510-860-4615
+86-19375157864
Email Info@ProMab.com
Web www.ProMab.com
www.ProMab.cn

Protocol

WB - www.promab.com/protocol/wb.html
IHC - www.promab.com/protocol/ihc.html
ICC - www.promab.com/protocol/icc.html
HCM - www.promab.com/protocol/hcm.html

Antigen Sequence is available upon request.

Products and Services

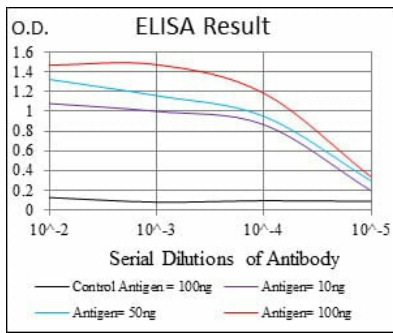
-  Mouse Monoclonal Antibody
-  Rat Monoclonal Antibody
-  Human Antibody
-  Hybridoma Sequencing
-  Polyclonal Antibody

For Research Only

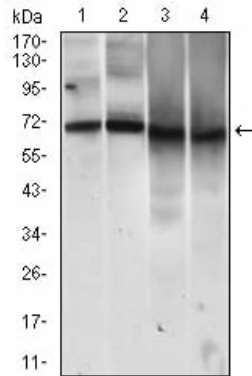
Application Key: WB - Western Blot | IHC - Immunohistochemistry | ICC - Immunocytochemistry | FCM - Flow Cytometry | ELISA - Enzyme-linked Immunosorbent Assay | IP - Immunoprecipitation

#30505

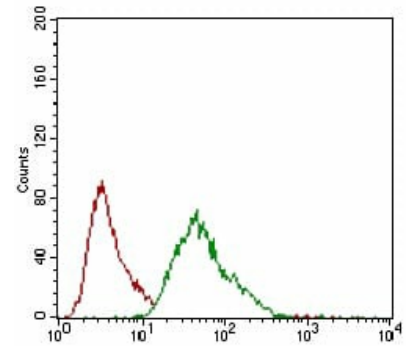
Mouse Monoclonal Antibody to MCAM



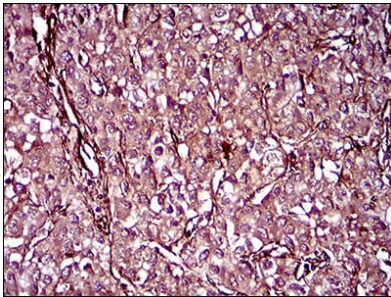
Black line: Control Antigen (100 ng);
Purple line: Antigen(10ng); Blue line:
Antigen (50 ng); Red line: Antigen
(100 ng);



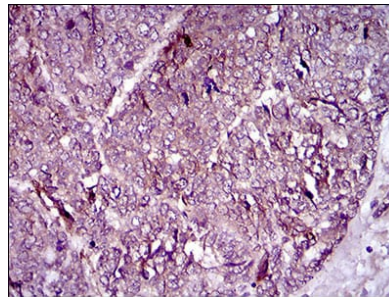
Western blot analysis using MCAM
mouse mAb against HUVE-12 (1),
EVC-304 (2), HELA (3) and MCF-7
(4) cell lysate.



Flow cytometric analysis of MCF-7
cells using MCAM mouse mAb
(green) and negative control (red).



Immunohistochemical analysis of
paraffin-embedded human liver
cancer tissues using MCAM mouse
mAb with DAB staining.



Immunohistochemical analysis of
paraffin-embedded human
esophageal cancer tissues using
MCAM mouse mAb with DAB
staining.