

# Mouse Monoclonal Antibody to MBP

## Order Information

Catalog#	30288	
Size/Concentration	50ul	100µl
Price(¥)	800	1280

## Description

The protein encoded by the classic MBP gene is a major constituent of the myelin sheath of oligodendrocytes and Schwann cells in the nervous system. However, MBP-related transcripts are also present in the bone marrow and the immune system. These mRNAs arise from the long MBP gene (otherwise called "Golli-MBP") that contains 3 additional exons located upstream of the classic MBP exons. Alternative splicing from the Golli and the MBP transcription start sites gives rise to 2 sets of MBP-related transcripts and gene products. The Golli mRNAs contain 3 exons unique to Golli-MBP, spliced in-frame to 1 or more MBP exons. They encode hybrid proteins that have N-terminal Golli aa sequence linked to MBP aa sequence. The second family of transcripts contain only MBP exons and produce the well characterized myelin basic proteins. This complex gene structure is conserved among species suggesting that the MBP transcription unit is an integral part of the Golli transcription unit and that this arrangement is important for the function and/or regulation of these genes.

## Specification

Entrez GeneID	4155
Aliases	MGC99675
Clone#	2H9
MW	33kDa
Host/Isotype	Mouse IgG1
Storage	4°C; -20°C for long term storage. Avoid freeze/thaw cycles.
Species Reactivity	Human
Immunogen	Purified recombinant fragment of human MBP expressed in E. Coli.
Formulation	Ascitic fluid containing 0.03% sodium azide.

## Application

ELISA	1/10000
ICC	1/200 - 1/1000
FCM	1/200 - 1/400
IHC	1/200 - 1/1000

## References

1. Cancer Epidemiol Biomarkers Prev. 2009 May;18(5):1651-8.
2. Biochemistry. 2009 Jun 9;48(22):4720-7.






Call 1-510-860-4615  
+86-19375157864  
Email [Info@ProMab.com](mailto:Info@ProMab.com)  
Web [www.ProMab.com](http://www.ProMab.com)  
[www.ProMab.cn](http://www.ProMab.cn)

## Protocol

WB - [www.promab.com/protocol/wb.html](http://www.promab.com/protocol/wb.html)  
IHC - [www.promab.com/protocol/ihc.html](http://www.promab.com/protocol/ihc.html)  
ICC - [www.promab.com/protocol/icc.html](http://www.promab.com/protocol/icc.html)  
HCM - [www.promab.com/protocol/hcm.html](http://www.promab.com/protocol/hcm.html)

**Antigen Sequence** is available upon request.

## Products and Services

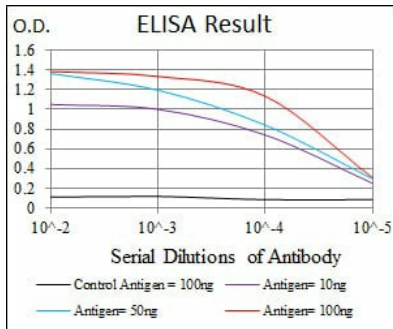
-  Mouse Monoclonal Antibody
-  Rat Monoclonal Antibody
-  Human Antibody
-  Hybridoma Sequencing
-  Polyclonal Antibody

## For Research Only

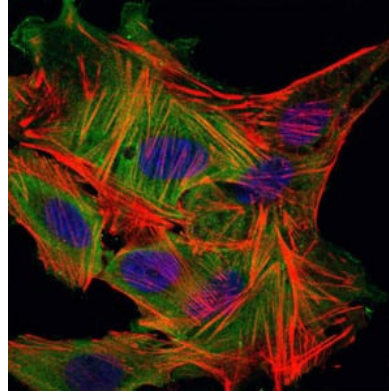
**Application Key:** WB - Western Blot | IHC - Immunohistochemistry | ICC - Immunocytochemistry | FCM - Flow Cytometry | ELISA - Enzyme-linked Immunosorbent Assay | IP - Immunoprecipitation

#30288

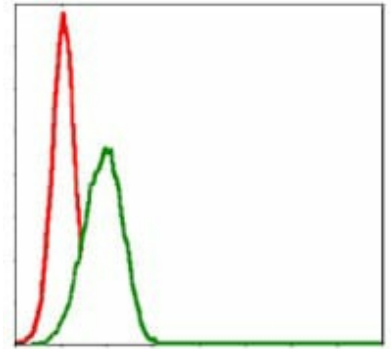
# Mouse Monoclonal Antibody to MBP



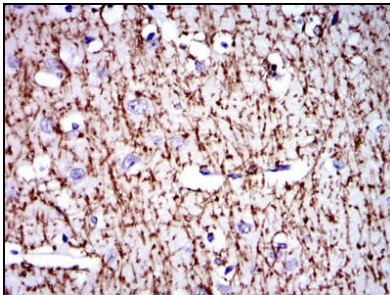
Black line: Control Antigen (100 ng);  
Purple line: Antigen(10ng); Blue line:  
Antigen (50 ng); Red line: Antigen  
(100 ng);



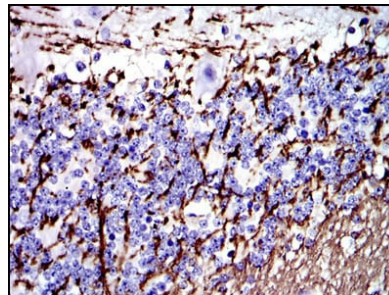
Immunofluorescence analysis of  
MSCS cells using MBP mouse mAb  
(green). Blue: DRAQ5 fluorescent  
DNA dye. Red: Actin filaments have  
been labeled with Alexa Fluor-555  
phalloidin.



Flow cytometric analysis of HepG2  
cells using MBP mouse mAb (green)  
and negative control (red).



Immunohistochemical analysis of  
paraffin-embedded human brain  
tissues using MBP mouse mAb with  
DAB staining.



Immunohistochemical analysis of  
paraffin-embedded human  
cerebellum tissues using MBP  
mouse mAb with DAB staining.

**For Research Only**

**Application Key:** WB - Western Blot | IHC - Immunohistochemistry | ICC - Immunocytochemistry |  
FCM - Flow Cytometry | ELISA - Enzyme-linked Immunosorbent Assay | IP - Immunoprecipitation

#30288