

# Mouse Monoclonal Antibody to NKX3A

## Order Information

Catalog#	30027
Size/Concentration	50ul 100µl
Price(¥)	1280 2180

## Description

Nkx3.1 is a transcription factor that may play an important role in regulating proliferation of glandular epithelium and in the formation of ducts in the prostate. It has been thought to be one of the target genes of the 8p21 loss of heterozygosity, common in prostate cancer. But neither disruption of the coding region of the gene, nor mutations have been found in prostate cancer.

## Specification

Entrez GeneID	4824
Aliases	NKX3; BAPX2; NKX3A; NKX3.1; NKX3-1
Clone#	4H4
MW	26.3kDa
Host/Isotype	Mouse IgG2b
Storage	4°C; -20°C for long term storage. Avoid freeze/thaw cycles.
Species Reactivity	Human
Immunogen	Purified recombinant fragment of human NKX 3A expressed in E. Coli.
Formulation	Ascitic fluid containing 0.03% sodium azide.

## Application

ELISA	1/10000
WB	1/500 - 1/2000
FCM	1/200 - 1/400
IHC	1/200 - 1/1000

## References

1. Exp Mol Med. 2006 Dec 31;38(6):625-33.
2. Exp Biol Med (Maywood). 2008 Mar;233(3):297-309.
3. Mol Biol Rep. 2010 Mar;37(3):1505-12.






Call 1-510-860-4615  
+86-19375157864  
Email [Info@ProMab.com](mailto:Info@ProMab.com)  
Web [www.ProMab.com](http://www.ProMab.com)  
[www.ProMab.cn](http://www.ProMab.cn)

## Protocol

WB - [www.promab.com/protocol/wb.html](http://www.promab.com/protocol/wb.html)  
IHC - [www.promab.com/protocol/ihc.html](http://www.promab.com/protocol/ihc.html)  
ICC - [www.promab.com/protocol/icc.html](http://www.promab.com/protocol/icc.html)  
HCM - [www.promab.com/protocol/hcm.html](http://www.promab.com/protocol/hcm.html)

**Antigen Sequence** is available upon request.

## Products and Services

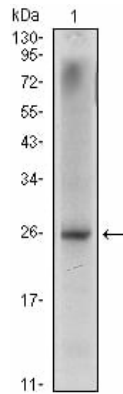
-  Mouse Monoclonal Antibody
-  Rat Monoclonal Antibody
-  Human Antibody
-  Hybridoma Sequencing
-  Polyclonal Antibody

**For Research Only**

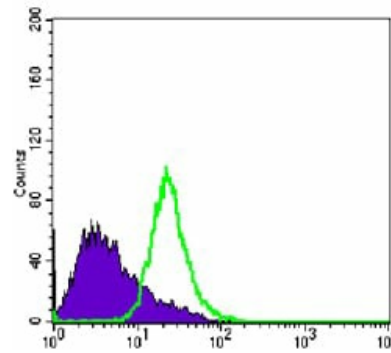
**Application Key:** **WB** - Western Blot | **IHC** - Immunohistochemistry | **ICC** - Immunocytochemistry | **FCM** - Flow Cytometry | **ELISA** - Enzyme-linked Immunosorbent Assay | **IP** - Immunoprecipitation

#30027

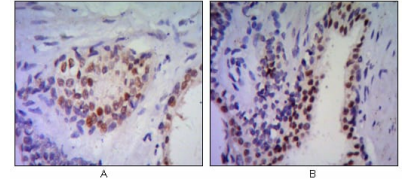
# Mouse Monoclonal Antibody to NKX3A



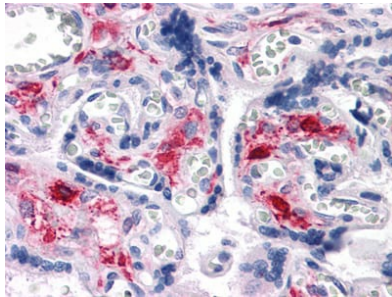
Western blot analysis using NKX3A mouse mAb against LNCaP (1) cell lysate.



Flow cytometric analysis of PC-3 cells using anti-NKX3A mAb (green) and negative control (purple).



Immunohistochemical analysis of paraffin-embedded human prostate tissues (A, B) using anti-NKX3A antibody with DAB staining.



Immunohistochemical analysis of paraffin-embedded human Liver tissues using NKX3A mAb

**For Research Only**

**Application Key:** **WB** - Western Blot | **IHC** - Immunohistochemistry | **ICC** - Immunocytochemistry | **FCM** - Flow Cytometry | **ELISA** - Enzyme-linked Immunosorbent Assay | **IP** - Immunoprecipitation

#30027