

Mouse Monoclonal Antibody to ERN1

Order Information

Catalog#	30026
Size/Concentration	50ul 100µl
Price(¥)	1280 2180

Description

The protein encoded by this gene is the ER to nucleus signalling 1 protein, a human homologue of the yeast Ire1 gene product. This protein possesses intrinsic kinase activity and an endoribonuclease activity and it is important in altering gene expression as a response to endoplasmic reticulum-based stress signals.

Specification

Entrez GeneID	2081
Aliases	IRE1; IRE1P; IRE1a; hIRE1p; FLJ30999; MGC163277; MGC163279; ERN1
Clone#	9F2
MW	109kDa
Host/Isotype	Mouse IgG1
Storage	4°C; -20°C for long term storage. Avoid freeze/thaw cycles.
Species Reactivity	Human
Immunogen	Purified recombinant fragment of human ERN1(aa282-433) expressed in E. Coli.
Formulation	Ascitic fluid containing 0.03% sodium azide.

Application

ELISA	1/10000
WB	1/500 - 1/2000
IHC	1/200 - 1/1000

References

- Biochem Biophys Res Commun. 2004 Apr 30;317(2):390-6.
- Mol Cell Biol. 2005 Sep;25(17):7522-33.
- Science. 2007 Nov 9;318(5852):944-9.






Call 1-510-860-4615
+86-19375157864
Email Info@ProMab.com
Web www.ProMab.com
www.ProMab.cn

Protocol

WB - www.promab.com/protocol/wb.html
IHC - www.promab.com/protocol/ihc.html
ICC - www.promab.com/protocol/icc.html
HCM - www.promab.com/protocol/hcm.html

Antigen Sequence is available upon request.

Products and Services

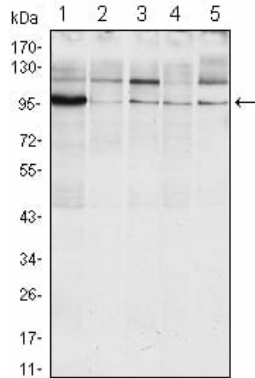
-  Mouse Monoclonal Antibody
-  Rat Monoclonal Antibody
-  Human Antibody
-  Hybridoma Sequencing
-  Polyclonal Antibody

For Research Only

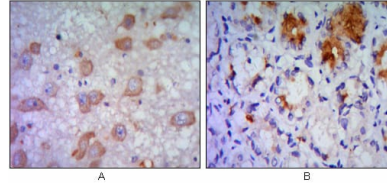
Application Key: WB - Western Blot | IHC - Immunohistochemistry | ICC - Immunocytochemistry | FCM - Flow Cytometry | ELISA - Enzyme-linked Immunosorbent Assay | IP - Immunoprecipitation

#30026

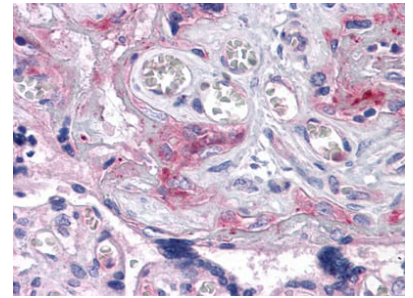
Mouse Monoclonal Antibody to ERN1



Western blot analysis using ERN1 mouse mAb against Raji (1), A431 (2), Jurkat (3), HeLa(4) and HEK293 (5) cell lysate.



Immunohistochemical analysis of paraffin-embedded human brain tissue (A) and stomach tissue (B), showing cytoplasmic localization using ERN1 mouse mAb with DAB staining.



Immunohistochemical analysis of paraffin-embedded human Placenta tissues using ERN1 mouse mAb