

Mouse Monoclonal Antibody to GTF2B

Order Information

Catalog#	20420
Size/Concentration	50ul 100µl
Price(¥)	1280 2180

Description

This gene encodes the general transcription factor IIB, one of the ubiquitous factors required for transcription initiation by RNA polymerase II. The protein localizes to the nucleus where it forms a complex (the DAB complex) with transcription factors IID and IIA. Transcription factor IIB serves as a bridge between IID, the factor which initially recognizes the promoter sequence, and RNA polymerase II.

Specification

Entrez GeneID	2959
Aliases	TF2B; TFIIB; GTF2B
Clone#	4C1
MW	34.8kDa
Host/Isotype	Mouse IgG1
Storage	4°C; -20°C for long term storage. Avoid freeze/thaw cycles.
Species Reactivity	Human,Monkey
Immunogen	Purified recombinant fragment of human GTF 2B expressed in E. Coli.
Formulation	Ascitic fluid containing 0.03% sodium azide.

Application

ELISA	1/10000
WB	1/500 - 1/2000

References






- Biochem Biophys Res Commun. 2004 Jul 16;320(1):1-6.
- Front Biosci. 2004 Sep 1;9:2388-413.

Call 1-510-860-4615
+86-19375157864
Email Info@ProMab.com
Web www.ProMab.com
www.ProMab.cn

Protocol

WB - www.promab.com/protocol/wb.html
IHC - www.promab.com/protocol/ihc.html
ICC - www.promab.com/protocol/icc.html
HCM - www.promab.com/protocol/hcm.html
Antigen Sequence is available upon request.

Products and Services

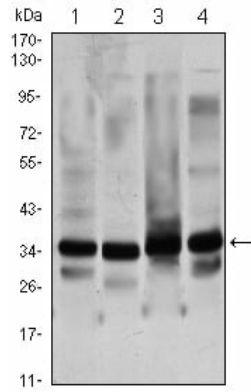
-  Mouse Monoclonal Antibody
-  Rat Monoclonal Antibody
-  Human Antibody
-  Hybridoma Sequencing
-  Polyclonal Antibody

For Research Only

Application Key: WB - Western Blot | IHC - Immunohistochemistry | ICC - Immunocytochemistry | FCM - Flow Cytometry | ELISA - Enzyme-linked Immunosorbent Assay | IP - Immunoprecipitation

#20420

Mouse Monoclonal Antibody to GTF2B



Western blot analysis using GTF2B mouse mAb against HeLa (1), NIH/3T3 (2), COS7 (3) and A431 (4) cell lysate.