

# Mouse Monoclonal Antibody to HER-2

## Order Information

Catalog#	20127
Size/Concentration	50ul 100µl
Price(¥)	1280 2180

## Description

The C-erbB-2 (HER-2/neu) gene encodes a member of the epidermal growth factor (EGF) receptor family of receptor tyrosine kinases. Amplification or overexpression of this gene has been reported in numerous cancers, including breast and ovarian tumors. High levels of c-erbB-2 were associated with estrogen receptor (ER) and progesterone receptor negativity. Overexpression of the c-erbB-2 oncogene has been shown to be associated with poor prognosis in ovarian and breast cancer. The level of increased Neu expression can be a predictor of disease prognosis.

## Specification

Entrez GeneID	2064
Aliases	HER-2, C-erbB-2, erbB-2
Clone#	9B9D8
Host/Isotype	Mouse IgG2b
Storage	4°C; -20°C for long term storage. Avoid freeze/thaw cycles.
Species Reactivity	Human
Immunogen	Purified recombinant fragment of HER-2 expressed in E. Coli.
Formulation	Ascitic fluid containing 0.03% sodium azide.

## Application

ELISA	1/10000
IHC	1/200 - 1/1000

## References

1. RR Mehta, JH McDermott, TJ Hieken, et al. J. Clin. Oncol. 1998;16:2409 - 2416.
2. Hideko Y, Vered S, and Daniel F.H, et al. J. Clin. Oncol. 2001;19:2334 - 2356.
3. Magali F, Kamel H, C






Call 1-510-860-4615  
+86-19375157864  
Email [Info@ProMab.com](mailto:Info@ProMab.com)  
Web [www.ProMab.com](http://www.ProMab.com)  
[www.ProMab.cn](http://www.ProMab.cn)

## Protocol

WB - [www.promab.com/protocol/wb.html](http://www.promab.com/protocol/wb.html)  
IHC - [www.promab.com/protocol/ihc.html](http://www.promab.com/protocol/ihc.html)  
ICC - [www.promab.com/protocol/icc.html](http://www.promab.com/protocol/icc.html)  
HCM - [www.promab.com/protocol/hcm.html](http://www.promab.com/protocol/hcm.html)

**Antigen Sequence** is available upon request.

## Products and Services

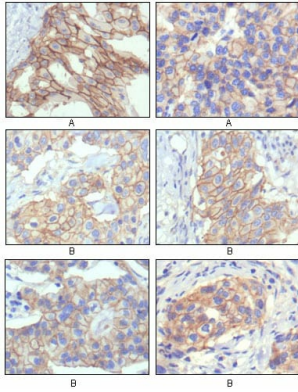
-  Mouse Monoclonal Antibody
-  Rat Monoclonal Antibody
-  Human Antibody
-  Hybridoma Sequencing
-  Polyclonal Antibody

**For Research Only**

**Application Key:** WB - Western Blot | IHC - Immunohistochemistry | ICC - Immunocytochemistry | FCM - Flow Cytometry | ELISA - Enzyme-linked Immunosorbent Assay | IP - Immunoprecipitation

#20127

## Mouse Monoclonal Antibody to HER-2



Immunohistochemical analysis of paraffin-embedded human breast intraductal carcinoma tissue(A) and breast infiltrating ductal carcinoma tissue(B) showing membrane localization using HER-2 mouse mAb with DAB staining.