

# Mouse Monoclonal Antibody to GSTP1

## Order Information

Catalog#	20099
Size/Concentration	50ul 100µl
Price(¥)	1280 2180

## Description

GSTP1 (glutathione-S-transferase, pi 1), also called GST3/DFN7, is a family of enzymes that play an important role in detoxification by catalyzing the conjugation of many hydrophobic and electrophilic compounds with reduced glutathione. GSTP1 act like a tumor suppressor gene, which when inactivated leads to tumor growth, and the -class glutathione S-transferase is commonly inactivated by somatic CpGisland hypermethylation in cancers of the prostate, liver, and breast. Methylation of regulatory sequences at the GSTP1 gene locus is found in the vast majority (>90%) of prostate carcinomas and is associated with transcriptional down-regulation.

## Specification

Entrez GeneID	2950
Aliases	PI; DFN7; GST3; FAEES3
Clone#	3F2C2
MW	23kDa
Host/Isotype	Mouse IgG1
Storage	4°C; -20°C for long term storage. Avoid freeze/thaw cycles.
Species Reactivity	Human
Immunogen	Purified recombinant fragment of human GST P1 expressed in E. Coli.
Formulation	Ascitic fluid containing 0.03% sodium azide.

## Application

ELISA	1/10000
WB	1/500 - 1/2000
ICC	1/200 - 1/1000
FCM	1/200 - 1/400
IHC	1/200 - 1/1000

## References

1. Kimihiko Satoh, Ken Itoh, Masayuki Yamamoto. 2002. Carcinogenesis. 23: 457 - 462.
2. Xiaohui Lin, William G. Nelson. 2003. Cancer Research. 63: 498-504.

Call 1-510-860-4615  
+86-19375157864  
Email Info@ProMab.com  
Web www.ProMab.com  
www.ProMab.cn

## Protocol

WB - [www.promab.com/protocol/wb.html](http://www.promab.com/protocol/wb.html)  
IHC - [www.promab.com/protocol/ihc.html](http://www.promab.com/protocol/ihc.html)  
ICC - [www.promab.com/protocol/icc.html](http://www.promab.com/protocol/icc.html)  
HCM - [www.promab.com/protocol/hcm.html](http://www.promab.com/protocol/hcm.html)

**Antigen Sequence** is available upon request.

## Products and Services

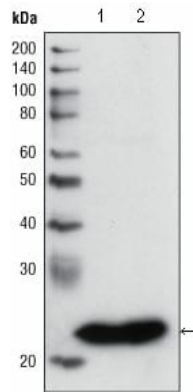
- Mouse Monoclonal Antibody
- Rat Monoclonal Antibody
- Human Antibody
- Hybridoma Sequencing
- Polyclonal Antibody

## For Research Only

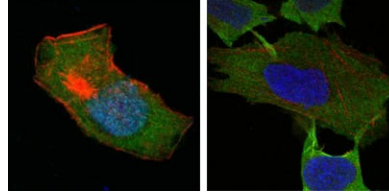
**Application Key:** WB - Western Blot | IHC - Immunohistochemistry | ICC - Immunocytochemistry | FCM - Flow Cytometry | ELISA - Enzyme-linked Immunosorbent Assay | IP - Immunoprecipitation

#20099

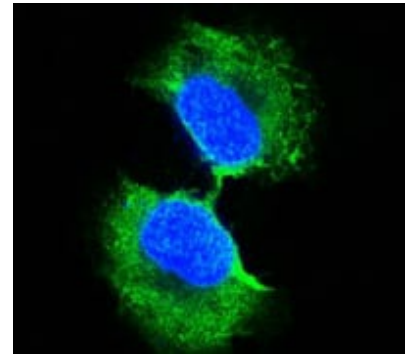
# Mouse Monoclonal Antibody to GSTP1



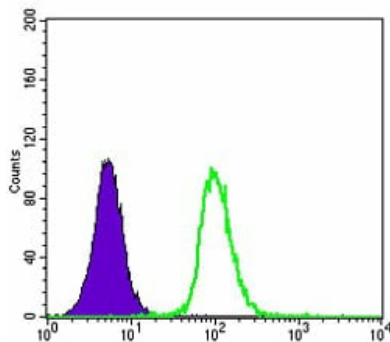
Western blot analysis using GSTP1 mouse mAb against PC3 cell lysate (1) and human cerebellum tissue lysate (2).



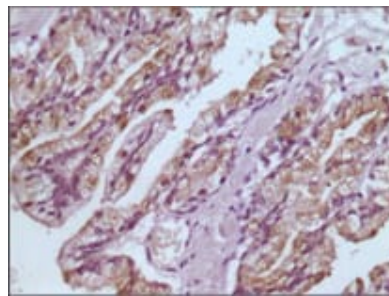
Confocal Immunofluorescence analysis of HepG2 (left) and L-02 (right) cells using GSTP1 mouse mAb (green). Red: Actin filaments have been labeled with DY-554 phalloidin. Blue: DRAQ5 fluorescent DNA dye.



Confocal Immunofluorescence analysis of PC-3 cells using GSTP1 mouse mAb (green). Blue: DRAQ5 fluorescent DNA dye.



Flow cytometric analysis of K562 cells using GSTP1 mouse mAb (green) and negative control (purple).



Immunohistochemical analysis of paraffin-embedded human prostate tissues using GSTP1 mouse mAb with DAB staining.

**For Research Only**

**Application Key:** **WB** - Western Blot | **IHC** - Immunohistochemistry | **ICC** - Immunocytochemistry | **FCM** - Flow Cytometry | **ELISA** - Enzyme-linked Immunosorbent Assay | **IP** - Immunoprecipitation

#20099