

Mouse Monoclonal Antibody to CD8

Order Information

Catalog#	20008
Size/Concentration	50ul 100µl
Price(¥)	1280 2180

Description

CD8 T cell surface antigen is heterodimer of an alpha and a beta chain linked by two disulfide bonds .It belongs type I membrane protein. Selectively expressing of CD8 on a subset of T cells leads to CD8 T cell development. Through identifying cytotoxic/suppressor T-cells that interact with MHC class I bearing targets, CD8 is thought to play a role in the process of T-cell mediated killing. Veillette et al (1988) found the CD8 is associated with the internal membrane tyrosine-protein kinase p56lck.

Specification

Entrez GeneID	925
Aliases	MAL; p32; Leu2; CD8A
Clone#	RAVB3
Host/Isotype	Mouse IgG1
Storage	4°C; -20°C for long term storage. Avoid freeze /thaw cycles.
Species Reactivity	Human
Immunogen	Purified recombinant fragment of human CD8 expressed in E. Coli.
Formulation	Purified antibody in PBS containing 0.03% so dium azide.

Application

ELISA	1/10000
FCM	1/200 - 1/400

References

1. Veillette, A. et al. 1988. Cell 55:301.






Call 1-510-860-4615
+86-19375157864
Email Info@ProMab.com
Web www.ProMab.com
www.ProMab.cn

Protocol

WB - www.promab.com/protocol/wb.html
IHC - www.promab.com/protocol/ihc.html
ICC - www.promab.com/protocol/icc.html
HCM - www.promab.com/protocol/hcm.html

Antigen Sequence is available upon request.

Products and Services

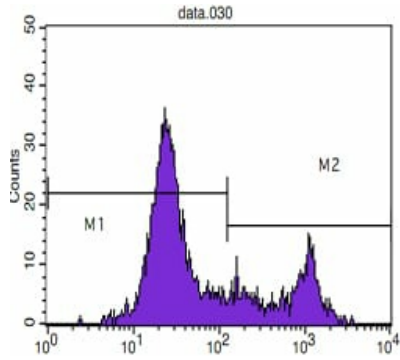
-  Mouse Monoclonal Antibody
-  Rat Monoclonal Antibody
-  Human Antibody
-  Hybridoma Sequencing
-  Polyclonal Antibody

For Research Only

Application Key: WB - Western Blot | IHC - Immunohistochemistry | ICC - Immunocytochemistry | FCM - Flow Cytometry | ELISA - Enzyme-linked Immunosorbent Assay | IP - Immunoprecipitation

#20008

Mouse Monoclonal Antibody to CD8



Flow cytometric analysis of blood T cells using CD8 mouse mAb (M2) and negative control (M1).