

Mouse Monoclonal Antibody to human IgG

Order Information

Catalog#	20002
Size/Concentration	50ul 100ul
Price(¥)	800 1280

Description

Monoclonal anti-human IgG is derived from the hybridoma1 produced by the fusion of mouse myeloma cells and splenocytes from an immunized mouse. It is specific for the whole human IgG molecule, has no across action with human IgM molecule as determined by an ELISA. Reactivity is observed with all human IgG subclasses but not with the Fab fragment of human IgG, the antibody site is located in the terminal end of human IgG (part of the Fab fragment), the Fc portion has various important functions such as complement fixation, site for rheumatoid factor.

Specification

Clone#	4D2D9G8
MW	50kDa
Host/Isotype	Mouse IgG1
Storage	4°C; -20°C for long term storage. Avoid freeze /thaw cycles.
Species Reactivity	Human
Immunogen	Human IgG was isolated from human sera and purified by chromatography.
Formulation	Purified antibody in PBS containing 0.03% sodium azide.

Application

ELISA	1/10000
WB	1/500 - 1/2000






Call 1-510-860-4615
+86-19375157864
Email Info@ProMab.com
Web www.ProMab.com
www.ProMab.cn

Protocol

WB - www.promab.com/protocol/wb.html
IHC - www.promab.com/protocol/ihc.html
ICC - www.promab.com/protocol/icc.html
HCM - www.promab.com/protocol/hcm.html

Antigen Sequence is available upon request.

Products and Services

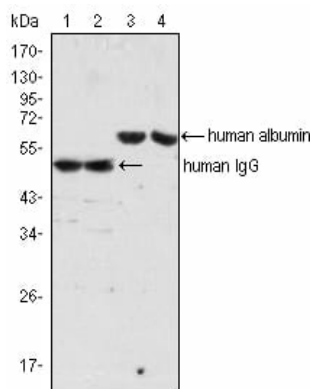
-  Mouse Monoclonal Antibody
-  Rat Monoclonal Antibody
-  Human Antibody
-  Hybridoma Sequencing
-  Polyclonal Antibody

For Research Only

Application Key: WB - Western Blot | IHC - Immunohistochemistry | ICC - Immunocytochemistry |
FCM - Flow Cytometry | ELISA - Enzyme-linked Immunosorbent Assay | IP - Immunoprecipitation

#20002

Mouse Monoclonal Antibody to human IgG



Western blot analysis using IgG mouse mAb (lane 1, 2) and Albumin mouse mAb (lane 3, 4) against human serum (lane 1, 3) and plasma (lane 2, 4).

For Research Only

Application Key: WB - Western Blot | IHC - Immunohistochemistry | ICC - Immunocytochemistry | FCM - Flow Cytometry | ELISA - Enzyme-linked Immunosorbent Assay | IP - Immunoprecipitation

#20002